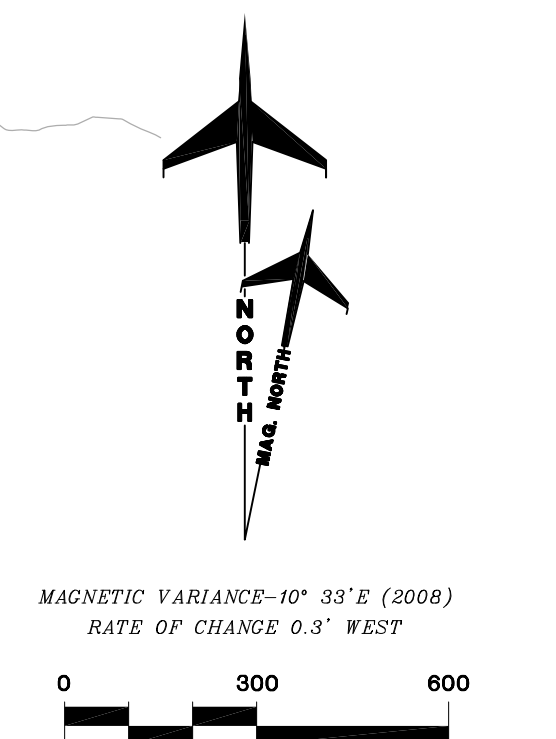
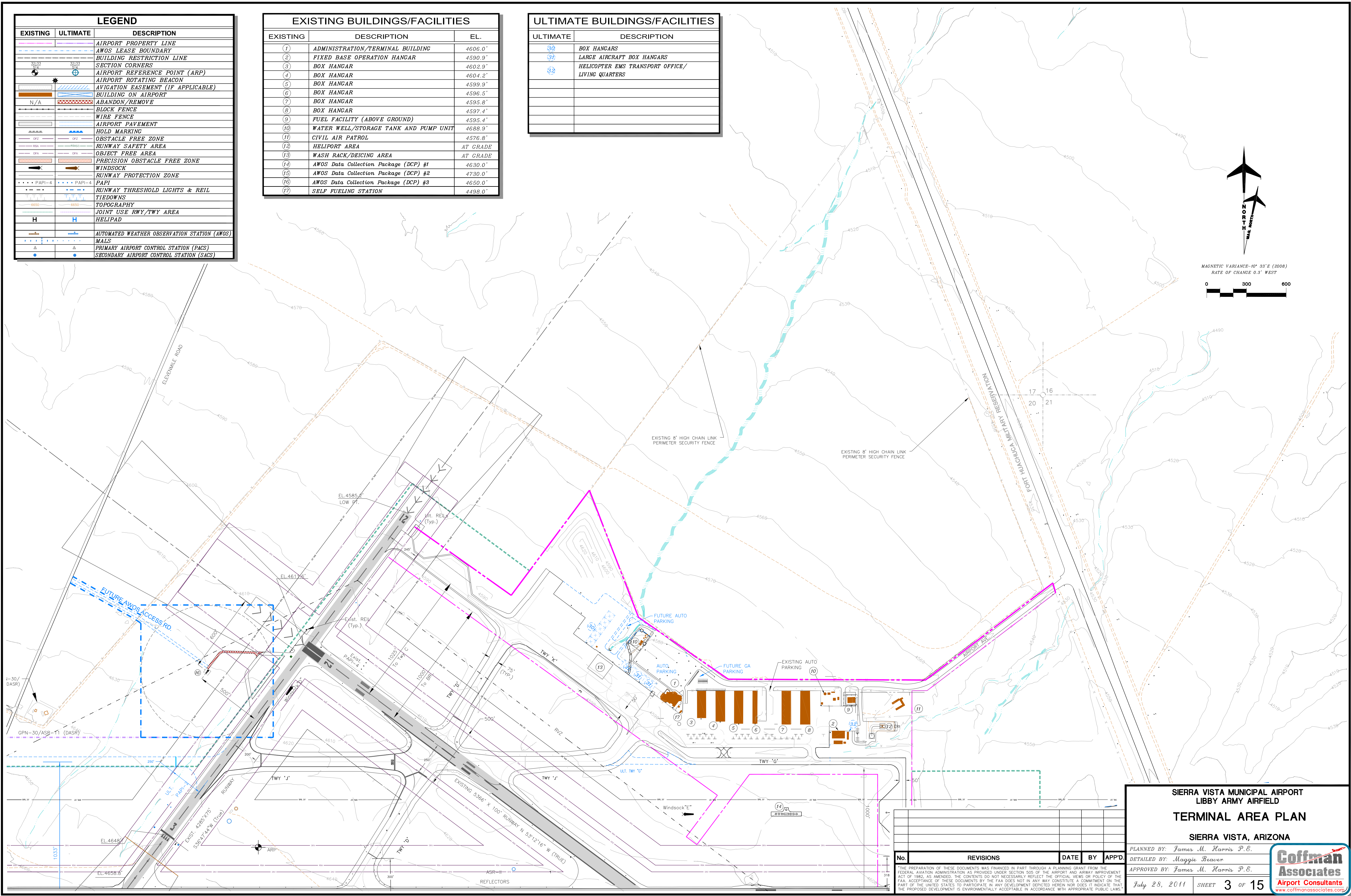


LEGEND		
EXISTING	ULTIMATE	DESCRIPTION
[Symbol]	[Symbol]	AIRPORT PROPERTY LINE
[Symbol]	[Symbol]	AWOS LEASE BOUNDARY
[Symbol]	[Symbol]	BUILDING RESTRICTION LINE
[Symbol]	[Symbol]	SECTION CORNERS
[Symbol]	[Symbol]	AIRPORT REFERENCE POINT (ARP)
[Symbol]	[Symbol]	AIRPORT ROTATING BEACON
[Symbol]	[Symbol]	AVIGATION EASEMENT (IF APPLICABLE)
[Symbol]	[Symbol]	BUILDING ON AIRPORT
[Symbol]	[Symbol]	ABANDON/REMOVE
[Symbol]	[Symbol]	BLOCK FENCE
[Symbol]	[Symbol]	WIRE FENCE
[Symbol]	[Symbol]	AIRPORT PAVEMENT
[Symbol]	[Symbol]	HOLD MARKING
[Symbol]	[Symbol]	OBSTACLE FREE ZONE
[Symbol]	[Symbol]	RUNWAY SAFETY AREA
[Symbol]	[Symbol]	OBJECT FREE AREA
[Symbol]	[Symbol]	PRECISION OBSTACLE FREE ZONE
[Symbol]	[Symbol]	WINDSOCK
[Symbol]	[Symbol]	RUNWAY PROTECTION ZONE
[Symbol]	[Symbol]	PAPI
[Symbol]	[Symbol]	RUNWAY THRESHOLD LIGHTS & REIL
[Symbol]	[Symbol]	TIEDOWNS
[Symbol]	[Symbol]	TOPOGRAPHY
[Symbol]	[Symbol]	JOINT USE RWY/TWY AREA
[Symbol]	[Symbol]	HELIPAD
[Symbol]	[Symbol]	AUTOMATED WEATHER OBSERVATION STATION (AWOS)
[Symbol]	[Symbol]	MALS
[Symbol]	[Symbol]	PRIMARY AIRPORT CONTROL STATION (PACS)
[Symbol]	[Symbol]	SECONDARY AIRPORT CONTROL STATION (SACS)

EXISTING BUILDINGS/FACILITIES		
EXISTING	DESCRIPTION	EL.
(1)	ADMINISTRATION/TERMINAL BUILDING	4606.0'
(2)	FIXED BASE OPERATION HANGAR	4590.9'
(3)	BOX HANGAR	4602.9'
(4)	BOX HANGAR	4604.2'
(5)	BOX HANGAR	4599.9'
(6)	BOX HANGAR	4596.5'
(7)	BOX HANGAR	4595.8'
(8)	BOX HANGAR	4597.4'
(9)	FUEL FACILITY (ABOVE GROUND)	4595.4'
(10)	WATER WELL/STORAGE TANK AND PUMP UNIT	4688.9'
(11)	CIVIL AIR PATROL	4576.8'
(12)	HELIPORT AREA	AT GRADE
(13)	WASH RACK/DEICING AREA	AT GRADE
(14)	AWOS Data Collection Package (DCP) #1	4630.0'
(15)	AWOS Data Collection Package (DCP) #2	4730.0'
(16)	AWOS Data Collection Package (DCP) #3	4650.0'
(17)	SELF FUELING STATION	4498.0'

ULTIMATE BUILDINGS/FACILITIES	
ULTIMATE	DESCRIPTION
(30)	BOX HANGARS
(31)	LARGE AIRCRAFT BOX HANGARS
(32)	HELICOPTER EMS TRANSPORT OFFICE/ LIVING QUARTERS



**SIERRA VISTA MUNICIPAL AIRPORT
LIBBY ARMY AIRFIELD
TERMINAL AREA PLAN**

SIERRA VISTA, ARIZONA

PLANNED BY: James M. Harris P.E.
 DETAILED BY: Maggie Beaver
 APPROVED BY: James M. Harris P.E.

July 28, 2011 SHEET 3 OF 15

Coffman Associates
Airport Consultants
www.coffmanassociates.com

No.	REVISIONS	DATE	BY	APP'D.

THE PREPARATION OF THESE DOCUMENTS WAS FINANCED IN PART THROUGH A PLANNING GRANT FROM THE FEDERAL AVIATION ADMINISTRATION AS PROVIDED UNDER SECTION 505 OF THE AIRPORT AND AIRWAY IMPROVEMENT ACT OF 1982, AS AMENDED. THE CONTENTS DO NOT NECESSARILY REFLECT THE OFFICIAL VIEWS OR POLICY OF THE FAA. ACCEPTANCE OF THESE DOCUMENTS BY THE FAA DOES NOT IN ANY WAY CONSTITUTE A COMMITMENT ON THE PART OF THE UNITED STATES TO PARTICIPATE IN ANY DEVELOPMENT DEPICTED HEREIN NOR DOES IT INDICATE THAT THE PROPOSED DEVELOPMENT IS ENVIRONMENTALLY ACCEPTABLE IN ACCORDANCE WITH APPROPRIATE PUBLIC LAWS.

Coffman Associates: h:\work\010\0101101\0101101.dwg 12/28/2010 10:00:00 AM PLOT: 12/28/2010 10:00:00 AM