

TITLE: City of Sierra Vista Open Space Plan

REFERENCES:

City of Sierra Vista General Development Plan (VISTA 2010)
Land Use Maps 1-6, 1995
Surface Water Plan, 1985
City of Sierra Vista Public Parks and Recreation Plan,
1996

1. Purpose: To establish a system of open space throughout the City, preserving scenic and natural resources and providing opportunities for outdoor recreation.

2. Concept: Using the Surface Water Plan as the framework for land development and the open space system, the City will pursue donation and dedication of natural washes and adjacent floodplains as public drainageways, thereby facilitating community programs to preserve natural ecosystems and scenic vistas and, through the development of walking and biking pathways, provide opportunities for healthful outdoor recreation by all age groups.

3. Responsibilities:

a. Director, Department of Development Services.

- (1) Proponent of this plan.
- (2) In coordination with the Planning and Zoning Commission, plan the City's open space system, recording the system on the City's land use maps.
- (3) In coordination with the Director of Public Works, pursue donation and dedication of natural washes and adjacent floodplains as public drainageways.
- (4) Promote inclusion of private open spaces in high-density residential developments.
- (5) Promote open spaces by establishing development codes that permit flexibility in design standards for subdivisions and individual structures.
- (6) Promote public and private programs to preserve natural ecosystems existing within the open space system and to protect wildlife species using these natural corridors.

- (7) Establish development codes that require drainageways be maintained in their natural state whenever possible. When necessary to stabilize natural channels, that indigenous materials be used whenever possible, all in conformance with the adopted Surface Water Plan, Appendix D of VISTA 2010.
- (8) Coordinate involvement of local artists in design of improvements in and along the open space system.
- (9) In conjunction with the Wetlands Project, promote the dedication of open space for nature-watching opportunities.
- (10) Promote joint-cooperative programs and inter-agency planning to establish pathways and trails linking the urban open space system with regional open space lands.
- (11) Promote the open space systems of the Upper San Pedro River Valley by forging cooperation between Cochise County, Fort Huachuca, Bureau of Land Management, U.S. Forest Service, Arizona State Land Department and other governmental and private entities having mutual interests.
- (12) As City Planning Agency, review open space planning actions. As appropriate, coordinate proponent presentations for public hearings and approval.
- (13) In coordination with Director, Parks and Leisure Services, pursue funds available through Federal and State recreation assistance programs.
- (14) In coordination with Director, Parks and Leisure Services, propose to the City Manager, appropriate distribution of parks acquisition and development fees to walking and biking pathway projects.

b. Director, Parks and Leisure Services.

- (1) Plan, prioritize, develop, supervise and maintain walking and biking pathways within the open space system.
- (2) Make timely application of walking and biking pathway projects in the capital improvements planning process.

- (3) Promote participation of volunteers, neighborhood residents, neighborhood associations and civic organizations in the development and maintenance of walking and biking pathways.
- (4) Review and update walking and biking pathway programs at least bi-annually. Present progress reports and plan updates for approval.

c. Director, Public Works Department

- (1) Perform basin management functions necessary for flood control, prevention of run-off damage, channel improvement and promotion of recharge along major drainageways within the open space system.
- (2) As required, coordinate design of walking and biking pathways within the open space system.

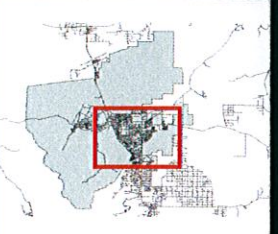
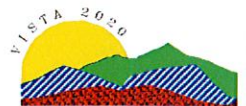
4. EXHIBITS:

- a. Open Space System. See Land Use Maps 1-6, City of Sierra Vista General Development Plan (VISTA 2010), 1995.
- b. Open Space Map. At Enclosure 1 is map depicting proposed open space and walking and biking pathways.
- c. Factors Affecting Walking and Biking Pathways Development. At Enclosure 2 is explanation of factors affecting priority for walking and biking pathway development.
- d. Walking and Biking Pathways Development Priority List. At Enclosure 3 is a list of walking and biking pathway segments in order of their priority for future development, target dates for completion of project plans, and estimate of development costs.

- e. Walking and Biking Pathway Specifications. At Enclosure 4 is diagram depicting specifications for typical walking and biking pathway within the Open Space System.
- f. Approved Pathway Project Site Plans. As approved for development, contingent on funding, pathway project site plans will be added at Enclosure 5.

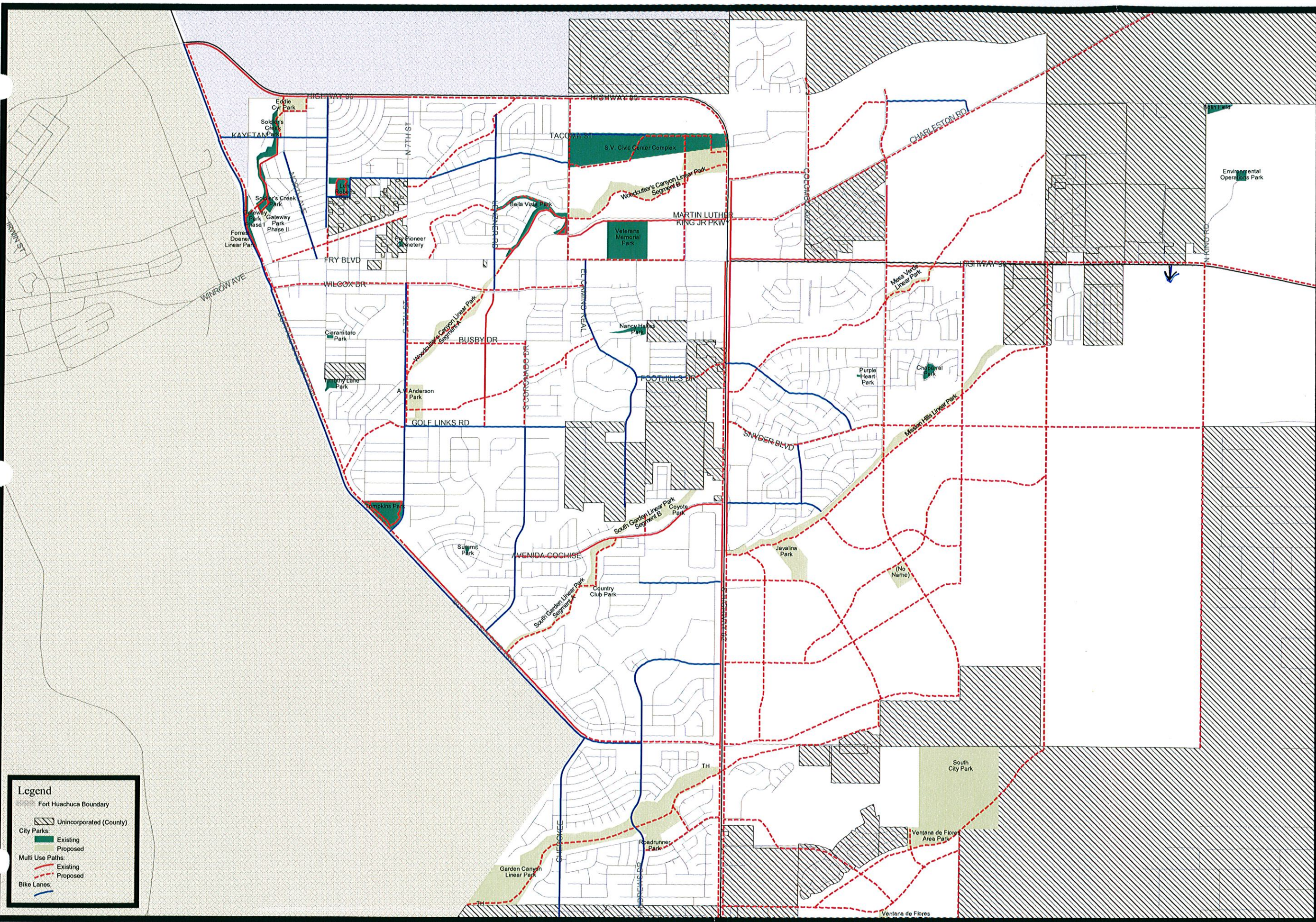
ENCLOSURE 1

Open Space Walking and Biking Pathways



Public Parks & Multi-Use Path Plan

This map is a product of the City of Sierra Vista GIS



Legend

- Fort Huachuca Boundary
- Unincorporated (County)
- City Parks:
 - Existing
 - Proposed
- Multi Use Paths:
 - Existing
 - Proposed
- Bike Lanes

ENCLOSURE 2

Factors Affecting Walking and Biking Pathway Development.

The following circumstances will be considered in assigning priority for developing segments of the walking and biking pathway system:

1. Pathway segments in urban areas linking open space areas.
2. Walking and biking pathways located in linear parks under development.
3. Walking and biking pathways located in other dedicated public drainageways.
4. Neighborhoods adjacent to the open space system and having a neighborhood association which agrees to assist in developing and maintaining their walking and biking pathway segments.
5. Walking and biking pathway segments for which a civic organization has agreed to provide assistance in development and maintenance.

ENCLOSURE 3

Walking and Biking Pathways Development Priority List

<u>Priority</u>	<u>Plan Completion</u>	<u>Estimated Development Cost</u>
1. Garden Canyon Linear Park Segment "C"		
2. South Garden Linear Park Segment "A"		
3. Woodcutters Linear Park Segment "E"		
4. Mission Hills Linear Park Segment "B"		
5. South Garden Linear Park Segment "B"		
6. Buffalo Soldier Trail South		
7. State Route 92 South		
8. Buffalo Soldier Trail North		
9. Lenzner Ave South		
10. Mission Hills Linear Park Segment "A"		
11. State Route 90 East		
12. State Route 90 Bypass		

ENCLOSURE 4

Walking and Biking Pathways Specifications

ENCLOSURE 5

Approved Pathway Project Site Plans

VSTOPSP.ACE/TXT/DSSEC

March 28, 1996

TITLE: City of Sierra Vista Parks and Recreation Facility Implementation Plan

REFERENCE: City of Sierra Vista General Plan
(VISTA 2020)

1. PURPOSE: To plan, acquire, develop, and maintain a system of park sites and recreation facilities.
2. CONCEPT: The City public parks system will provide the following types of park sites and recreation facilities:
 - a. Neighborhood Parks on sites of up to 5 acres in area, within reasonable walking distance of no more than ½ mile radius for local residents. Facilities may include such items as sand boxes, playing apparatuses, half basketball court, lighting, water fountains, grass and/or foliage, benches, and ramadas.
 - c. Community Parks on greater than 5 and less than 40 acre sites within a 3 mile radius of each other. Facilities may include such items as restrooms, ramadas, benches, picnic tables, BBQ units, multi-use paths, horseshoe pits, playing apparatuses, lighting, open space for free play activities, maintenance facilities, and drinking fountains.
 - d. Linear Parks along dedicated drainageways. Facilities may include such items as multi-use paths, benches, lighting, ramadas, BBQ units, picnic tables, nature displays, bird feeders, and water areas supporting wildlife.
 - e. Large City Parks on sites 40 acres or more. Facilities may include such items as benches, ramadas, BBQ units, picnic tables, multi-use paths, horseshoe pits, playing apparatuses, drinking fountains, restrooms, maintenance facilities, concession stands, lighting, and indoor and outdoor sports and recreation facilities.
 - f. Multi-Use Paths within the urban open space system and within natural and man-made corridors. See City of Sierra Vista Public Parks and Multi-Use Path Plan Map, 2008.
 - g. Sports and Recreation Facilities within a new or existing park or complex such as tennis courts, softball diamonds, baseball diamonds, soccer fields, basketball courts, volleyball courts, aquatic facilities, recreation center, gymnasium, skate facilities, exercise facilities, dog park, and water features. Specialized recreational facilities to include cultural, historic, and environmental facilities. Associated parking area, maintenance area, and office area for support. Other amenities may be added as the site allows. Sports facilities for organized sports shall preferably be located where high intensity sport lighting does not affect residential areas, and may be adjacent to other parks.

3. RESPONSIBILITIES:

a. Park and Recreation Commission

1. Proponent of the Plan;
2. Make timely application for inclusion of public park projects in capital improvement planning process;
3. Seek public input concerning park facilities desired;
4. Recommend park sites and facilities;
5. Recommend policies and procedures for operation, maintenance and improvement of park and recreation facilities.

b. Director, Parks and Leisure Services

Under the direction of the City Manager

1. Inventory existing park and recreation facilities and provide plan for use in Enclosure 4;
2. Plan, develop, supervise, and maintain public parks and sports and recreation facilities;
3. Use, when possible, native and drought tolerant plants;
4. Make timely application for inclusion of public park projects in the capital improvement planning process;
5. Pursue park development on all levels based on priorities of the community in conjunction with the Parks and Recreation Commission;
6. In coordination with the City Manager's Office, Director of Community Development, and consultation with the Parks and Recreation Commission, review and make recommendations of all requests for waivers of park and development fees, as provided for in a provision of the City Development Code (Article 151.12);
7. Promote participation of volunteers, neighborhood residents, neighborhood associations, and civic organizations in the development and maintenance of parks and facilities;
8. Negotiate and oversee formal agreements with associations and organizations assisting in park development and maintenance;
9. Establish and collect special maintenance fees paid by users of public parks and sports and recreation facilities;

10. In coordination with the Sierra Vista School District, promote joint use of District and City parks and recreational facilities;
 11. In coordination with Fort Huachuca, State Land Department, Bureau of Land Management (BLM), Arizona Department of Transportation (ADOT), Forest Service, and other public and private agencies promote access to public lands, facilities, and recreational events;
 12. Plan and conduct appropriate recreational programs and events;
 12. Establish priorities for acquisition and development of park sites and recreational facilities;
 14. Study the acquisition from state, BLM, or private donor of additional large City park site(s);
 15. Based upon the above study, pursue acquisition of the large city park site and plan for its development;
 16. Review and update neighborhood, community, linear, and large city park programs at least bi-annually, present progress reports and plan updates to the City Council for approval.
- c. Director, Department of Community Development.
1. As a City Planning Agency, review parks planning actions. Coordinate proponent presentations for Planning & Zoning Commission and City Council public hearings and approval.
 2. In coordination with Director, Parks and Leisure Services, pursue funds available through Federal and State recreation assistance programs.
 3. In coordination with Director, Parks and Leisure Services, establish in City Development Code appropriate parks acquisition and development fees derived from new residential developments.
 4. In coordination with Director, Parks and Leisure Services, propose to the City Manager plans for equitable distribution of parks acquisition and development fees.
 5. Promote private donation, dedication, or trade of appropriate land parcels for inclusion in the public park system.
 6. As a provision of the City Development Code, establish policy and procedures to permit appropriate waiver of parks acquisition and development fees with the recommendation of the Parks and Recreation Commission when developers donate or dedicate integral land parcels for inclusion in the public park system, and when developers provide private parks for use of their residents. Notify City Clerk of all applicable waivers.

- d. City Clerk. Collect all applicable parks acquisition and development fees and disburse them according to the City Manager's plan for equitable distribution.

4. EXHIBITS:

- a. Public Parks & Multi-Use Path Plan Map. Enclosure 1 is a list of existing and proposed parks by name, type, and size. A map depicting locations of existing parks; undeveloped, dedicated park sites; general locations of park sites proposed for future development; existing and proposed multi-use paths; and roadways wide enough for bicycle traffic. Exhibits, in the form of diagrams, depict existing and proposed park site dimensions and facilities.
- b. Factors Affecting Parks Development. Enclosure 2 is an explanation of factors affecting priority for park site development.
- c. Parks Development Priority List. Enclosure 3 is a list of public park sites in order of their priority for future development.
- d. Approved Parks Project Site Plans. As approved for development, contingent on funding, park project site plans will be added at Enclosure 4.

ENCLOSURE 1

Existing Parks:

Name	Type	Acres
Bella Vista Park	Neighborhood	1
Bolin Field	Other	4
Chaparral Park	Neighborhood	3
Ciaramitaro Park	Neighborhood	.45
Environmental Operations Park	Other	2
Forest Doerner Linear Park	Linear	2
Gateway Park Phase I	Community	3
Len Roberts Park	Community	7
Nancy Hakes Park	Neighborhood	3
Purple Heart Park	Neighborhood	.18
S.V. Civic Center Complex	Sport & Rec. Complex	95
Soldier's Creek Park	Linear	18
Summit Park	Neighborhood	1
Timothy Lane Park	Neighborhood	2
Tompkins Park	Community	18
Veterans Memorial Park	Large City	40
Total (Approx.):		204

Proposed Parks:

Name	Type	Acres
A.V. Anderson Park	Community	15
Country Club Park	Neighborhood	1
Coyote Park	Community	6
Eddie Cyr Park <i>Eyr Center Park</i>	Community/Sports & Rec.	12
Garden Canyon Linear Park	Linear	148
Gateway Park Phase II	Community	1.8
Javalina Park	Community	22
Mesa Verde Linear Park	Linear	8
Mission Hills Linear Park	Linear	49
No Name (Tribute Specific Plan Area)	Community	10
Roadrunner park	Community	14
South City Park	Large City	165
South Garden Linear Park	Linear	39
Ventana de Flores Park	Community	20
Ventana de Flores Park	Neighborhood	5
Woodcutter's Canyon Linear Park	Linear	67
Total: (Approx.)		569

ENCLOSURE 2

Factors Affecting Parks Development

The following circumstances will be considered in assigning priority for park development.

1. Neighborhoods having no park within reasonable walking distance of up to ½ mile radius or having serious park deficiencies.
2. Neighborhoods having a neighborhood association that agrees to assist in developing and maintaining a dedicated neighborhood or linear park site.
3. Neighborhoods in which a developer or other donor has dedicated an appropriate site for a neighborhood or linear park.
4. Park sites for which a civic organization has agreed to provide assistance in development and maintenance.

ENCLOSURE 3

Parks Development Priority List

Each element of VISTA 2020 contains goals, policies, and objectives for the future of the community. Objectives are designated as short term or long-term objectives. Short-term objectives include high priority projects that are expected to be completed within the next three years; Long-term objectives include projects that are expected to take longer than three years to complete.

Neighborhood Parks

Plan for the development of neighborhood parks on sites of up to five acres in area within reasonable walking distance of no more than ½ mile radius for affected residents. Input shall be sought from residents concerning the types of facilities desired.

Short-Term Objective: Plan neighborhood parks for existing and proposed developments.

Country Club Park

Long-Term Objective: Plan for the establishment of neighborhood parks.

Mesa Verde Park

Ventana de Flores Park (No name currently assigned)

Community Parks

Plan for the development of community parks on greater than 5 and less than 40 acre sites. Input shall be sought from the surrounding community concerning the type of facilities desired.

Short-Term Objective:

Roadrunner's Park

~~Eddie Cyr Park~~ *Cyr Center Park*

Long-Term Objective

A.V. Anderson Park

Javalina Park

Tribute Specific Plan Park (No name currently assigned)

Coyote Park

Ventana de Flores Area Park (No name currently assigned)

Gateway Park Phase II

Linear Parks

Plan for the development of linear parks along dedicated drainage ways.

Short-Term Objective:

Garden Canyon Linear Park
South Garden Linear Park Segment "A"

Long-Term Objective:

Woodcutters Linear Park Segments "A & B"
Mission Hills Linear Park
South Garden Linear Park Segment "B"

Large City Park

Plan for the development of an additional large City park on a 40-acre or greater site.

Short-Term Objective: Study acquisition of parkland from State, BLM or private donor.

Long-Term Objective: Pending results of study, acquire the park site and plan for its development.

South City Park

Multi-Use Paths

Plan for the development of multi-use paths within the urban open space system of natural and man-made corridors. See City of Sierra Vista's Public Parks and Multi-Use Path Plan Map, 2008.

Priority Paths for Future Construction

Highway 90 Bypass
Forest Doerner Linear Part to Fry Boulevard
Southbound, Highway 92 between Foothills Drive and Avenida Cochise
Buffalo Soldier Trail
Highway 92 between Buffalo Soldier Trail and Kachina Trail

Existing paths: ~~18 miles (Approx.)~~ ~~19 miles (Approx.)~~ (Hwy 90 completed
Proposed paths: ~~30 miles (Approx.)~~ 22 miles between Fry's & Hospital)
70 July 2008

Sports and Recreational Facilities

Plan for the development of sports playing fields used primarily for organized sports, and recreational facilities; specialized facilities to include cultural, historic, and environmental facilities; associated parking area, maintenance area, and office area for support.

Short-Term Objective:

Four softball fields at the east end of Tacoma Street in the Sierra Vista Civic Center Complex.

Three multi-use playing fields at Eddie Cyr Park...

Long-Term Objective:

Historical Museum

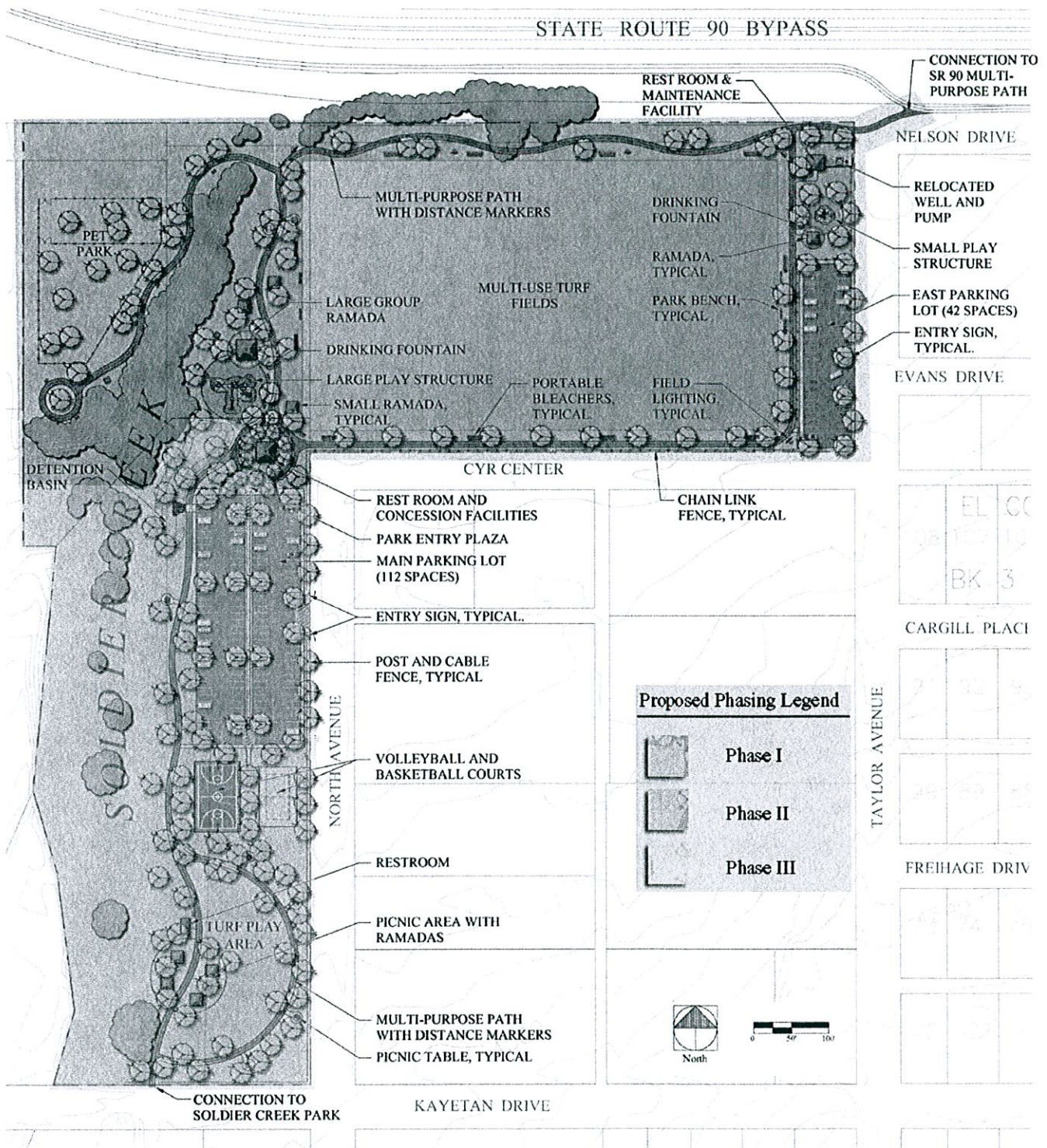
Fry Pioneer Cemetery

Band Shell

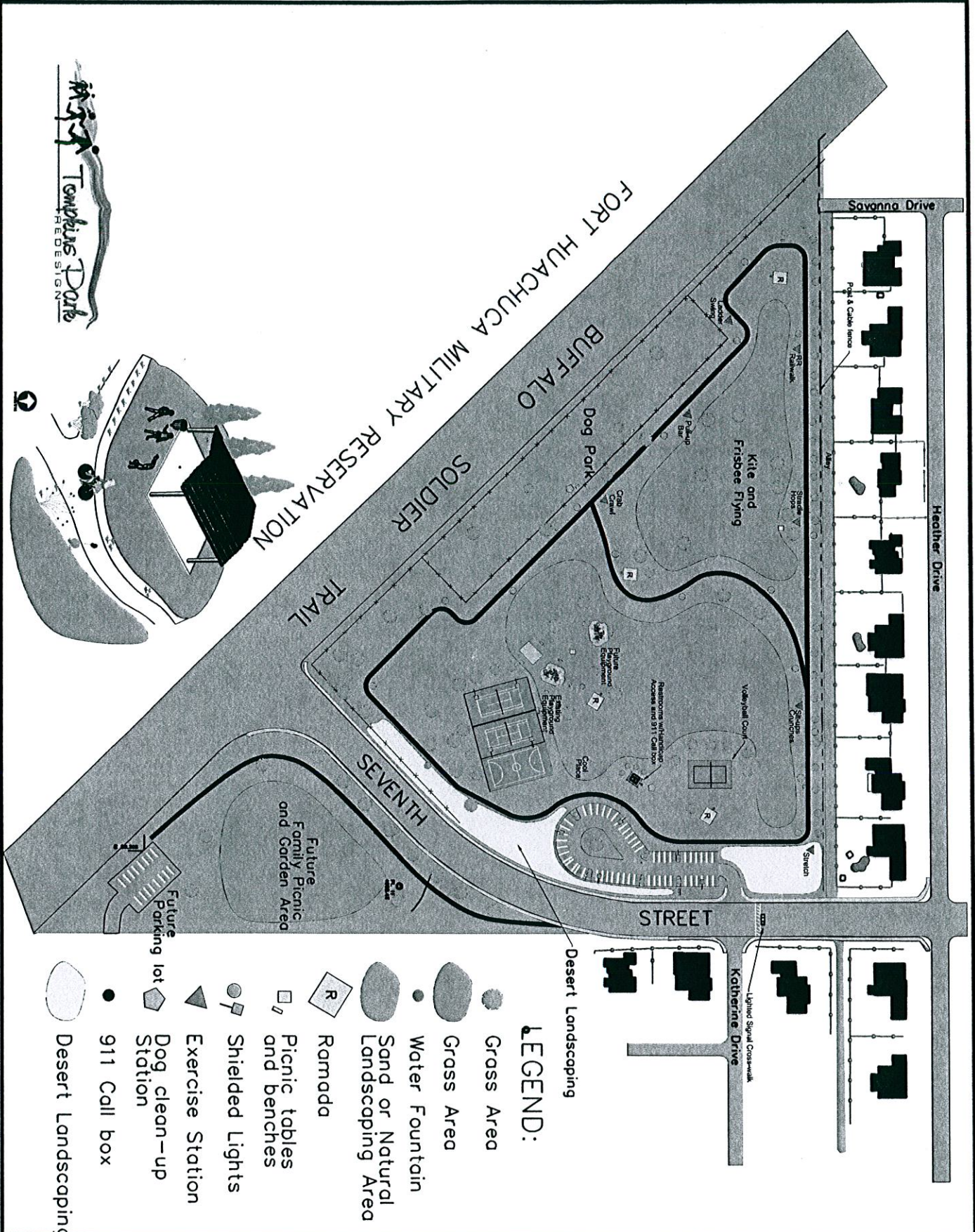
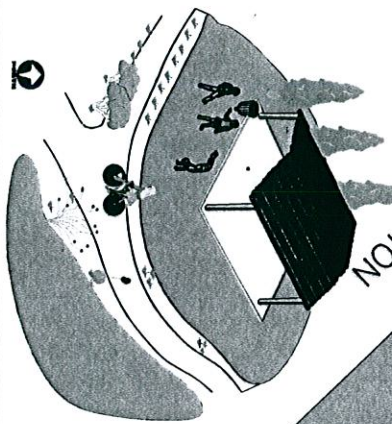
ENCLOSURE 4

APPROVED PARKS PROJECT SITE PLANS

Center
Eddie Cyr Park Master Plan



PROPOSED PHASING PLAN



LEGEND:

- Grass Area
- Grass Area
- Water Fountain
- Sand or Natural Landscaping Area
- Ramada
- Picnic tables and benches
- Shielded Lights
- Exercise Station
- Dog clean-up Station
- 911 Call box
- Desert Landscaping

IRRIGATION LEGEND

- ⊕ REMOTE CONTROL VALVE
- ⊙ QUICK COUPLER VALVE
- ⤴ AUTOMATIC CONTROLLER
- REDUCED PRESSURE ASSY.
- PRESSURE REGULATOR
- ┆ LATERAL HOSE END
- ┆ MULTI-OUTLET EMITTER
- ▬ PIPE SLEEVE
- ⊢ GATE VALVE
- ⊙ WATER METER
- ⊙ FULL BOX
- WATER VALVE
- ⊙ SURVEY MONUMENT
- ┆ IRRIGATION LINE
- ┆ GRADER DITCH
- ┆ EXISTING WATER LINE
- ┆ R.O.W. WITH BARBED WIRE FENCE

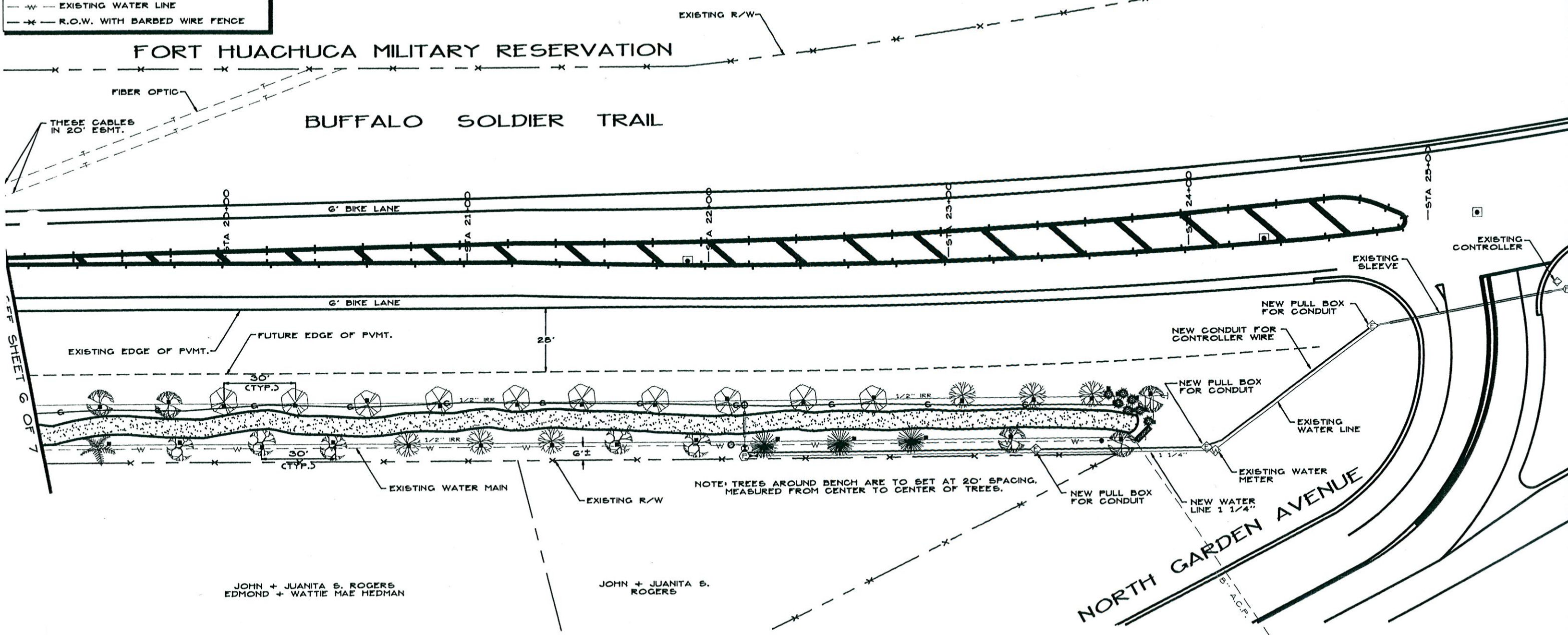


SCALE 1"=20'

LANDSCAPE LEGEND

(FOR THIS SHEET)

SYMBOL	PLANT NAME	GENUS/SPECIES	SHT. QUANT.	PROJ. TOTAL	SIZE	REMARKS
	LONDON PLANE TREE	(PLATANUS ACERIFOLIA)	1	2	15 GAL.	STAKE
	MONDEL PINE	(PINUS BRUTIA EL-DARCA)	6	16	15 GAL.	STAKE
	ALEPPO PINE	(PINUS HALEPENSIS)	3	13	15 GAL.	STAKE
	ARIZONA CYPRESS	(CUPRESSUS ARIZONICA)	5	10	15 GAL.	STAKE
	RED YUCCA	(HESPERALOE PARVIFLORA)	7	13	5 GAL.	
	DESERT WILLOW	(CHILOPIS LINEARIS)	5	13	15 GAL.	STAKE
	HONEY LOCUST SUNBURST	(GLEDITSIA TRIACANTHOS NERMIS "SUNBURST")	10	12	15 GAL.	STAKE
	8' WIDE PATH (JOGGING/WALKING)					
	BENCH 2'x8', C3 TOTAL FOR THIS PROJECT					



FOREST M. DOERNER MEMORIAL LINEAR PARK



IRRIGATION LEGEND

- ⊗ REMOTE CONTROL VALVE
- ⊕ QUICK COUPLER VALVE
- ⊙ AUTOMATIC CONTROLLER
- ⊖ REDUCED PRESSURE ASSY.
- PRESSURE REGULATOR
- └ LATERAL HOSE END
- ─ MULTI-OUTLET EMITTER
- ─ PIPE SLEEVE
- ⌵ GATE VALVE
- ⊕ WATER METER
- ⊕ FULL BOX
- WATER VALVE
- ⊕ SURVEY MONUMENT
- ─ 1" IRR. IRRIGATION LINE
- ─ GRADER DITCH
- ─ W EXISTING WATER LINE
- ─ X R.O.W. WITH BARBED WIRE FENCE

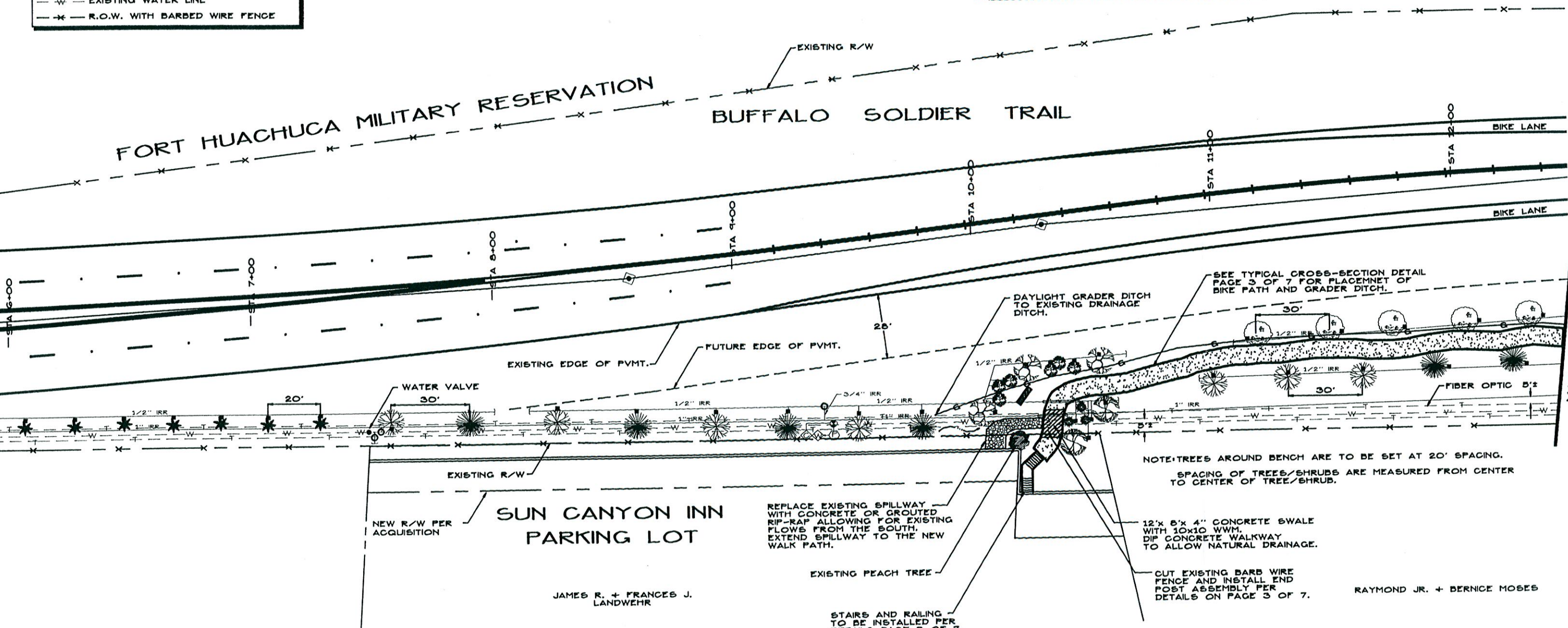


SCALE 1"=20'

LANDSCAPE LEGEND

FOR THIS SHEET						
SYMBOL	PLANT NAME	GENUS/SPECIES	SHT. QUANT.	PROJ. TOTAL	SIZE	REMARKS
	MONDEL PINE	(PINUS BRUTIA ELDARICA)	7	16	15 GAL.	STAKE
	ALEPPO PINE	(PINUS HALEPENSIS)	6	13	15 GAL.	STAKE
	ARIZONA CYPRESS	(CUPRESSUS ARIZONICA)	2	10	15 GAL.	STAKE
	TEXAS RANGER	(LEUCOPHYLLUM FRUTESCENS)	6	6	5 GAL.	
	DESERT WILLOW	(CHILOPSIS LINEARIS)	2	13	15 GAL.	STAKE
	RED YUCCA	(HESPERALOE PARVIFLORA)	3	13	5 GAL.	
	HONEY LOCUST SHADEMASTER	(GLEDITSIA TRIACANTHOS INERMIS "SHADEMASTER")	5	13	15 GAL.	STAKE
	CAROLINA LAUREL CHERRY	(PRUNUS CAROLINANA)	7	7	5 GAL.	
	8' WIDE PATH (JOGGING/WALKING)					
	BENCH 2'x8' (3 TOTAL FOR THIS PROJECT)					

MATCHLINE STA 5+93.89 SEE SHEET 4 OF 7



SEE TYPICAL CROSS-SECTION DETAIL PAGE 3 OF 7 FOR PLACEMENT OF BIKE PATH AND GRADER DITCH.

NOTE: TREES AROUND BENCH ARE TO BE SET AT 20' SPACING. SPACING OF TREES/SHRUBS ARE MEASURED FROM CENTER TO CENTER OF TREE/SHRUB.

REPLACE EXISTING SPILLWAY WITH CONCRETE OR GROUTED RIP-RAP ALLOWING FOR EXISTING FLOWS FROM THE SOUTH. EXTEND SPILLWAY TO THE NEW WALK PATH.

EXISTING PEACH TREE

STAIRS AND RAILING TO BE INSTALLED PER DETAILS PAGE 3 OF 7.

12' x 8' x 4" CONCRETE SWALE WITH 10x10 WWM. DIP CONCRETE WALKWAY TO ALLOW NATURAL DRAINAGE.

CUT EXISTING BARB WIRE FENCE AND INSTALL END POST ASSEMBLY PER DETAILS ON PAGE 3 OF 7.

SUN CANYON INN PARKING LOT

JAMES R. + FRANCES J. LANDWEHR

RAYMOND JR. + BERNICE MOSES

FOREST M. DOERNER MEMORIAL LINEAR PARK

Two days before working... call 1-800-782-5348 for overhead utility locations

IRRIGATION LEGEND

- ⊕ REMOTE CONTROL VALVE
- ⊙ QUICK COUPLER VALVE
- ⊞ AUTOMATIC CONTROLLER
- ⊞ REDUCED PRESSURE ASSY.
- PRESSURE REGULATOR
- LATERAL HOSE END
- MULTI-OUTLET EMITTER
- ▬ PIPE SLEEVE
- ⊞ GATE VALVE
- ⊞ WATER METER
- ⊞ FULL BOX
- WATER VALVE
- ⊞ SURVEY MONUMENT
- 1" IRR. IRRIGATION LINE
- GRADER DITCH
- w— EXISTING WATER LINE
- x— R.O.W. WITH BARBED WIRE FENCE



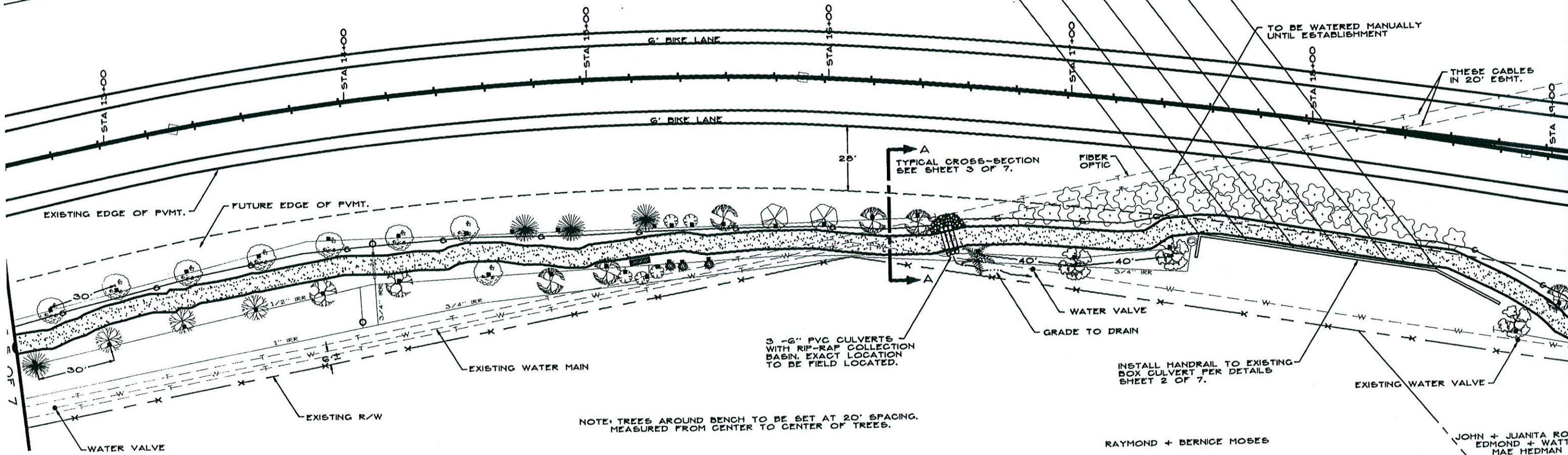
SCALE 1"=20'

LANDSCAPE LEGEND (FOR THIS SHEET ONLY)

SYMBOL	PLANT NAME	GENUS/SPECIES	SHR. QUANT.	PROJ. TOTAL	SIZE	REMARKS
	MONDEL PINE	(PINUS BRUTA ELDARCA)	3	16	15 GAL.	STAKE
	ALEPPO PINE	(PINUS HALEPENSIS)	9	13	15 GAL.	STAKE
	ARIZONA CYPRESS	(CUPRESSUS ARIZONICA)	2	10	15 GAL.	STAKE
	LONDONPLANE TREE	(PLATANUS ADERIFOLIA)	1	2	15 GAL.	STAKE
	DESERT WILLOW	(CHILOPSIS LINEARIS)	6	13	15 GAL.	STAKE
	RED YUCCA	(HESPERALOE PARVIFLORA)	3	13	5 GAL.	
	HONEY LOCUST SHADEMASTER	(GLEDITIA TRIACANTHOS INERMIS "SHADEMASTER")	8	13	15 GAL.	STAKE
	HONEY LOCUST SUNBURST	(GLEDITIA TRIACANTHOS INERMIS "SUNBURST")	2	12	15 GAL.	STAKE
	FOUR-WING SALTBUSH	(ATRIFLEX CANESCENS)	5	5	5 GAL.	
	DESERT FLOWER MX	(ADOT SPEC.)	3,588 SF	3,588 SF		
	FREMONT COTTONWOOD	(POPULUS FREMONTI)	3	3	15 GAL.	STAKE
	8' WIDE PATH (JOGGING/WALKING)					
	BENCH 2'x8'; (3 TOTAL FOR THIS PROJECT)					

FORT HUACHUCA MILITARY RESERVATION

BUFFALO SOLDIER TRAIL



FOREST M. DOERNER MEMORIAL LINEAR PARK



RF GRASS RENOVATION NOTES:

SOIL PREPARATION FOR RENOVATED TURF GRASS AREAS SHALL CONSIST OF THE FOLLOWING:

- A. EXCAVATION AND REMOVAL FROM THE SITE OF THE TOP SIX INCHES (6") OF SOIL INCLUDING EXISTING TURF GRASS.
- B. PLACEMENT AND SPREADING OF SOIL AMENDMENTS TO THE SUBGRADE AT THE SPECIFIED RATES.
- C. TILLING OF SOIL AMENDMENTS INTO THE TOP 3" - 4" INCHES OF EXISTING NATIVE SOIL TO FORM A HOMOGENEOUS SOIL MIXTURE.
- D. DUST CONTROL AS REQUIRED DURING TILLING OPERATIONS.
- E. FINE GRADING AND THE REMOVAL OF ALL SURFACE ROCK WITH A DIMENSION OF ONE INCH (1") OR LARGER.
- F. OPERATION OF THE IRRIGATION SYSTEM TO SETTLE PREPARED SOIL MATERIAL AND AS-NEEDED SURFACE ROCK REMOVAL.

TURF GRASS AREAS SHALL NOT BE SEEDED UNTIL THE SOIL PREPARATION WORK HAS BEEN COMPLETED AND APPROVED BY THE OWNER'S REPRESENTATIVE.

SEEDING WORK SHALL NOT BEGIN UNTIL THE IRRIGATION SYSTEM IN THE AREA TO BE SEEDED HAS BEEN INSTALLED AND MADE FULLY OPERATIONAL.

THE SEED SHALL BE UNIFORMLY APPLIED TO THE PREPARED SOIL SURFACE AT THE SPECIFIED SOWING RATE.

IMMEDIATELY FOLLOWING SEEDING THE AREA SHALL BE LIGHTLY RAKED TO INCORPORATE THE SEED INTO THE TOP ONE-EIGHTH INCH (1/8") OF SOIL. THE AREA SHALL THEN BE ROLLED WITH A HAND-PROPELLED, WATER-FILLED DRUM ROLLER.

IMMEDIATELY FOLLOWING SEEDING THE AREA SHALL BE IRRIGATED. THEREAFTER, THE AREA SHALL BE IRRIGATED AT REGULAR INTERVALS AS REQUIRED TO KEEP THE TOP FOUR INCHES (4") OF SOIL CONTINUOUSLY MOIST THROUGH TURF GRASS ESTABLISHMENT. IRRIGATION WATER APPLICATION SHALL NOT CREATE RUN-OFF OR FLOODING.

ALL AREAS WHICH DO NOT SHOW SIGNS OF TURF GRASS GROWTH 15 DAYS AFTER INITIAL PLANTING, AS DETERMINED BY THE OWNER'S REPRESENTATIVE, SHALL BE RESEED AS SPECIFIED.

WEEDS WHICH GERMINATE WITHIN THE TURF GRASS AREA SHALL BE MECHANICALLY REMOVED OR TREATED WITH A SELECTIVE HERBICIDE AS APPROVED BY THE OWNER'S REPRESENTATIVE. THE TURF AREA SHALL BE KEPT IN A WEED FREE CONDITION.

THE APPLICATION OF HERBICIDES SHALL BE PERFORMED BY AN APPLICATOR LICENSED BY THE STATE OF ARIZONA.

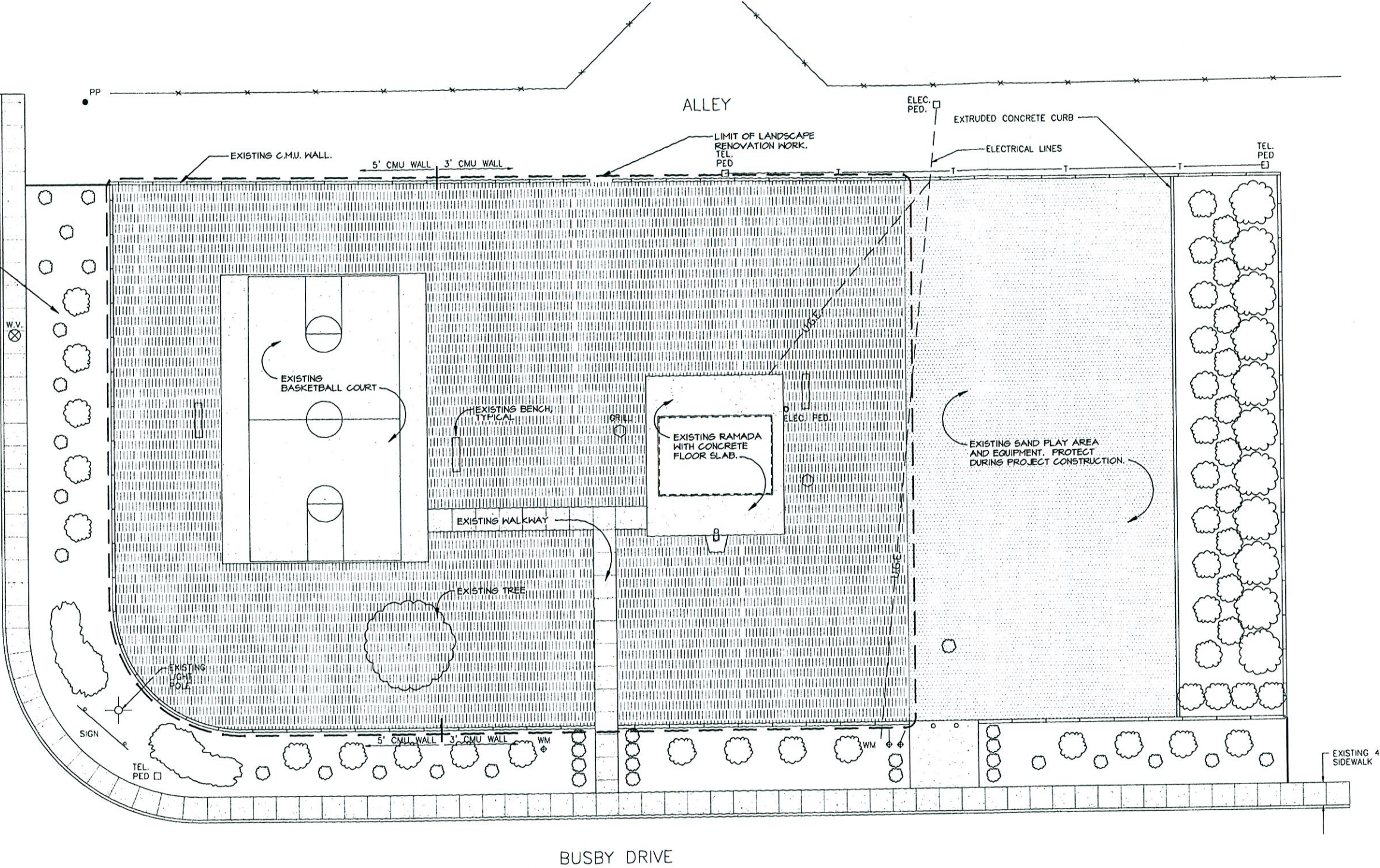
THE CONTRACTOR SHALL BE RESPONSIBLE FOR THE INSTALLATION AND MAINTENANCE OF BARRICADES AS REQUIRED TO KEEP FOOT TRAFFIC OFF THE NEW TURF GRASS AREAS FROM TIME OF PLANTING THROUGH TURF GRASS ESTABLISHMENT. BARRICADE TYPES AND LOCATIONS SHALL BE AS APPROVED BY THE OWNER'S REPRESENTATIVE.

FINISHED GRADES, SLOPES, AND DRAINAGE PATTERNS IN ALL LANDSCAPED (TURF GRASS) AREAS SHALL BE IN CONFORMANCE WITH EXISTING DRAINAGE PATTERNS ON THE PROJECT SITE. FINISHED GRADES SHALL BE MAINTAINED BY THE CONTRACTOR THROUGH THE END OF THE SPECIFIED INITIAL MAINTENANCE PERIOD.

FINISHED GRADES ADJACENT TO CURBS, WALKS, PATHS, AND OTHER PAVEMENTS SHALL BE AS DETAILED. WHERE DETAILS ARE NOT PROVIDED, A REVEAL OF ONE INCH (1") SHALL BE PROVIDED.

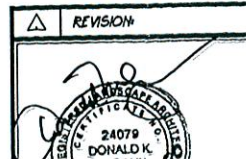
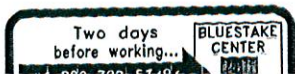
EXISTING TREES, SHRUBS, SURFACING AND ASSOCIATED IRRIGATION SYSTEM BETWEEN EXISTING C.M.U. WALL AND EXISTING SIDEWALK TO REMAIN. PROTECT DURING CONSTRUCTION.

CARMICHAEL AVENUE



LANDSCAPE PLAN
SCALE 1" = 10'-0"

LANDSCAPE LEGEND	
	TURF GRASS AREA TO BE RENOVATED AS PART OF THIS PROJECT.
	EXISTING CONCRETE PAVEMENT (COURT, RAMADA SLAB, SIDEWALK) TO REMAIN. PROTECT DURING PROJECT CONSTRUCTION.
	EXISTING SAND SURFACED PLAYGROUND AREA. IMPROVEMENTS TO PLAYGROUND AREA NOT INCLUDED IN THE SCOPE OF THIS PROJECT.
	EXISTING MASONRY WALL. PROTECT DURING PROJECT CONSTRUCTION.
	EXISTING TREES AND SHRUBS TO REMAIN. PROTECT DURING PROJECT CONSTRUCTION.



DATE: *09/20/22* APPROVED BY: *[Signature]*
 DEPARTMENT OF ENGINEERING SERVICES
 CITY OF SIERRA VISTA
 CIARAMITARO PARK
 LANDSCAPE PLAN

SCALE: 1"=10'-0"
 DESIGN: DKM
 DRAWN:

1:25000 SCALE TO CENTER POINT

1:25000 SCALE TO CENTER POINT



NORTH
GARDEN AVENUE
(STATE HWY 90 ABANDONED)

FORT AVENUE

PEDESTRIAN BRIDGE

RAMADA

NEW PARKING LOT

PFISTER AVE.

SYCAMORE DR.

NEW PARKING LOT

TAYLOR DR.

KAYETAN DR.

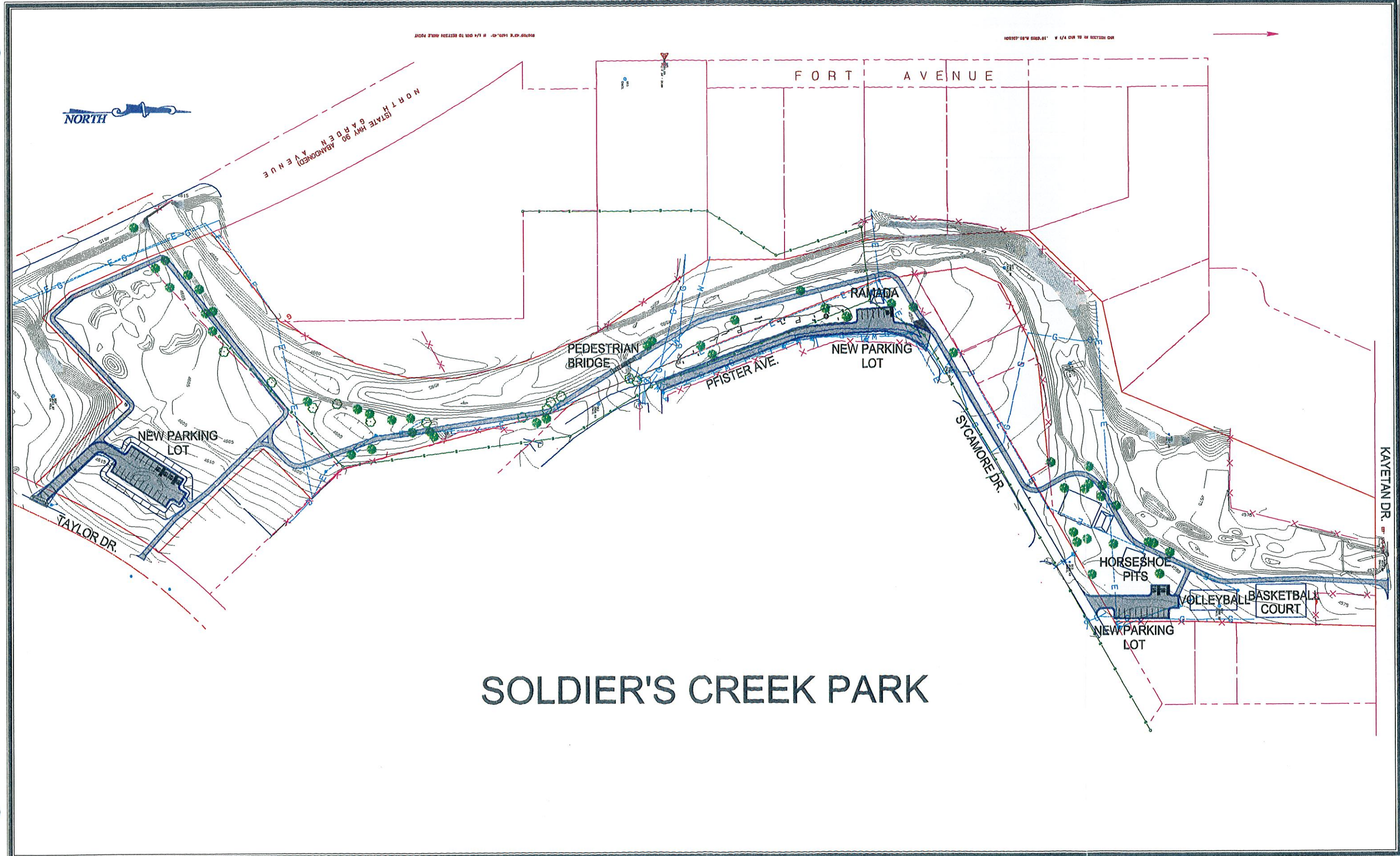
HORSESHOE PITS

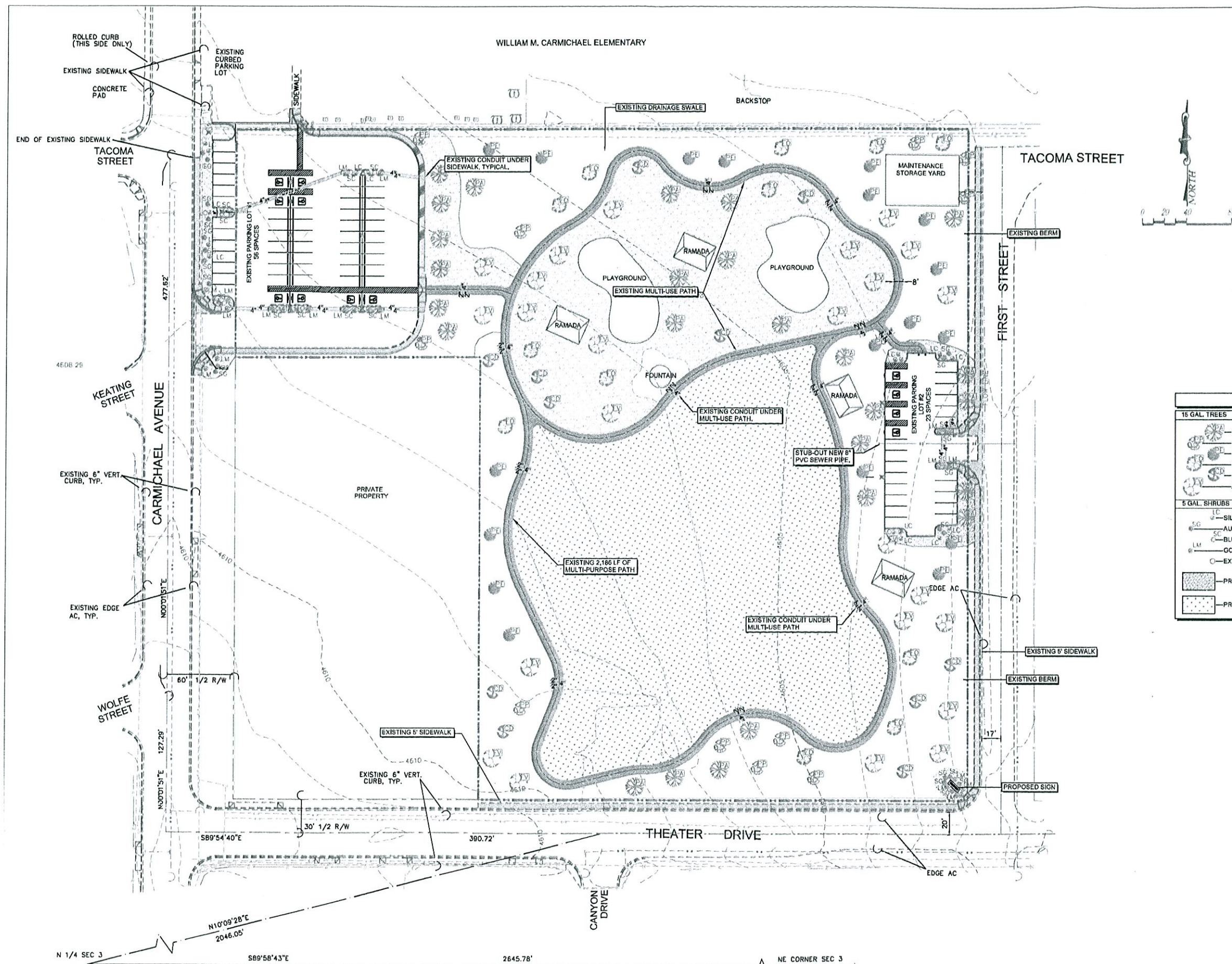
VOLLEYBALL COURT

BASKETBALL COURT

NEW PARKING LOT

SOLDIER'S CREEK PARK

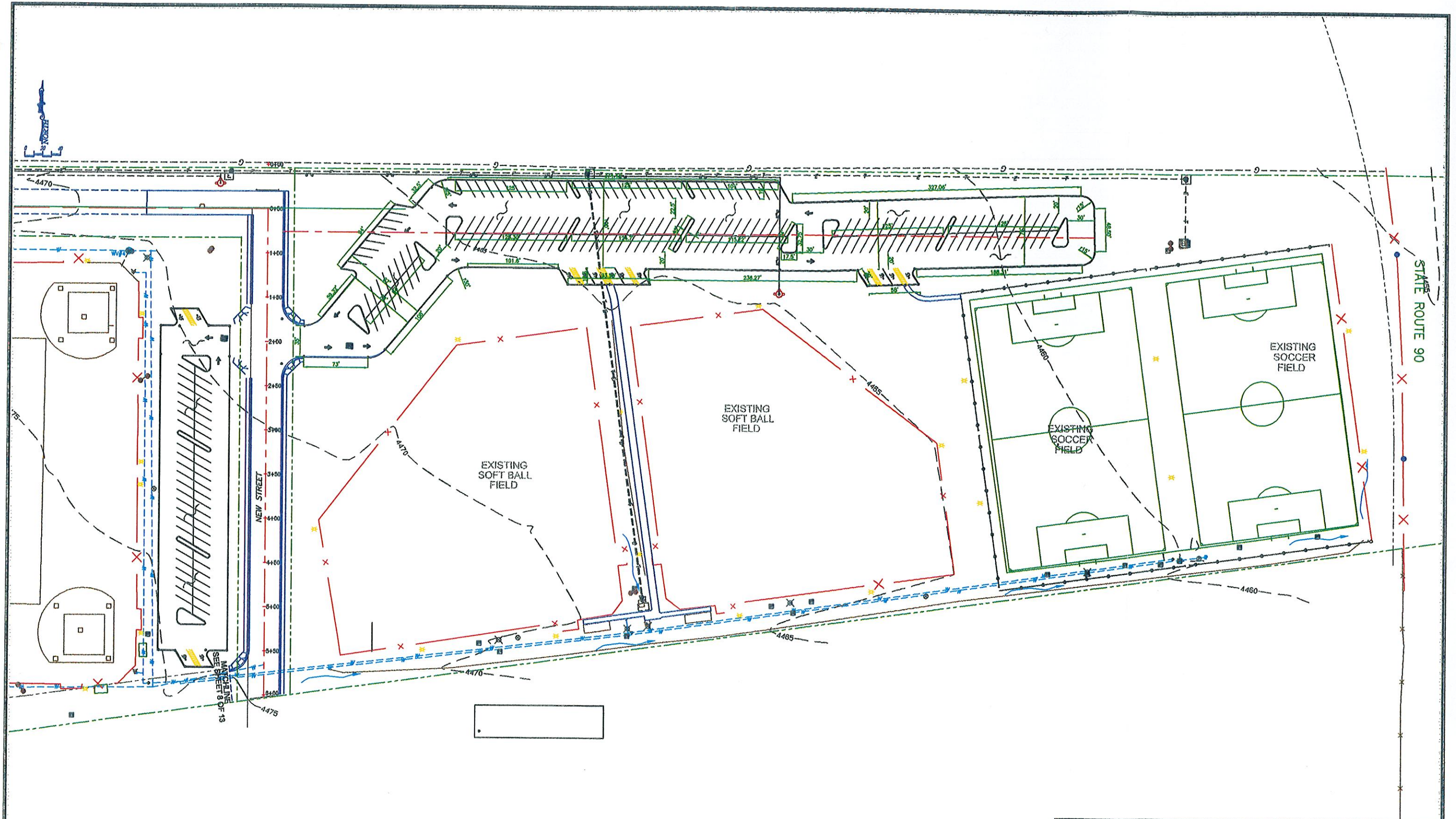




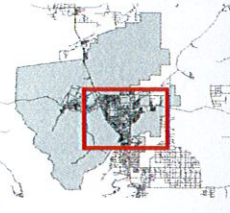
LEGEND	
	EXISTING TOPOGRAPHIC LINE
	EXISTING SEWER LINE
	EXISTING WATER LINE
	EXISTING GAS LINE
	EXISTING TELEPHONE LINE
	EXISTING FENCE LINE
	EXISTING ROADWAY CENTERLINE
	EXISTING CURB, GUTTER AND SIDEWALK LINE
	EXISTING VEGETATION
	EXISTING PARK BOUNDARY
	EXISTING 5' SIDEWALK, CURB AND GUTTER
	EXISTING 4" AND 2" CONDUIT INSTALLED UNDER MULTI-USE PATH FOR LANDSCAPING

PLANT LEGEND		
15 GAL. TREES	COMMON NAME / BOTANICAL NAME	QUANTITY
	LONDONPLANE TREE / PLATANUS ACERIFOLIA	25
	ITALIAN STONE PINE / PINUS PINEA	11
	ELDARCIA PINE / PINUS ELDARCIA	18
	RAYWOOD ASH / FRAXINUS OXYCARPA	12
	DEODAR CEDAR / CEDRUS DEODORA	11
	ARIZONA ASH / FRAXINUS VELUTINA	24
5 GAL. SHRUBS	COMMON NAME / BOTANICAL NAME	QUANTITY
	SILVER CLOUD RANGER / LEUCOPHYLLUM CANDIDUM	22
	AUTUMN SAGE / SALVIA GREGGII	25
	BLUE SAGE / SALVIA CHAMAEDRYOIDES	13
	GOLDMOUND LATANA / LATANA MONTEVIDENSIS	21
	EXISTING VEGETATION	
	PROPOSED AREA FOR DECOMPOSED GRANITE	
	PROPOSED AREA FOR GRASS AND HILLS	

N 1/4 SEC 3
 N10°09'28"E
 2046.05'
 S89°54'40"E
 390.72'
 2645.78'
 NE CORNER SEC 3



	DEPARTMENT OF PUBLIC WORKS CITY OF SIERRA VISTA DOMINGO PAIZ PARKING LOT IMPROVEMENT PROJECT - PK8100 PARKING LOT PLAN	SCALE: 1"=40' DESIGN: JPW DRAWN: JM/PAU CHECKED: MFI
FILE: DP8C473	CITY OF SIERRA VISTA 1011 CORONADO DR., PH. 458-3315	DATE: 11-10-97

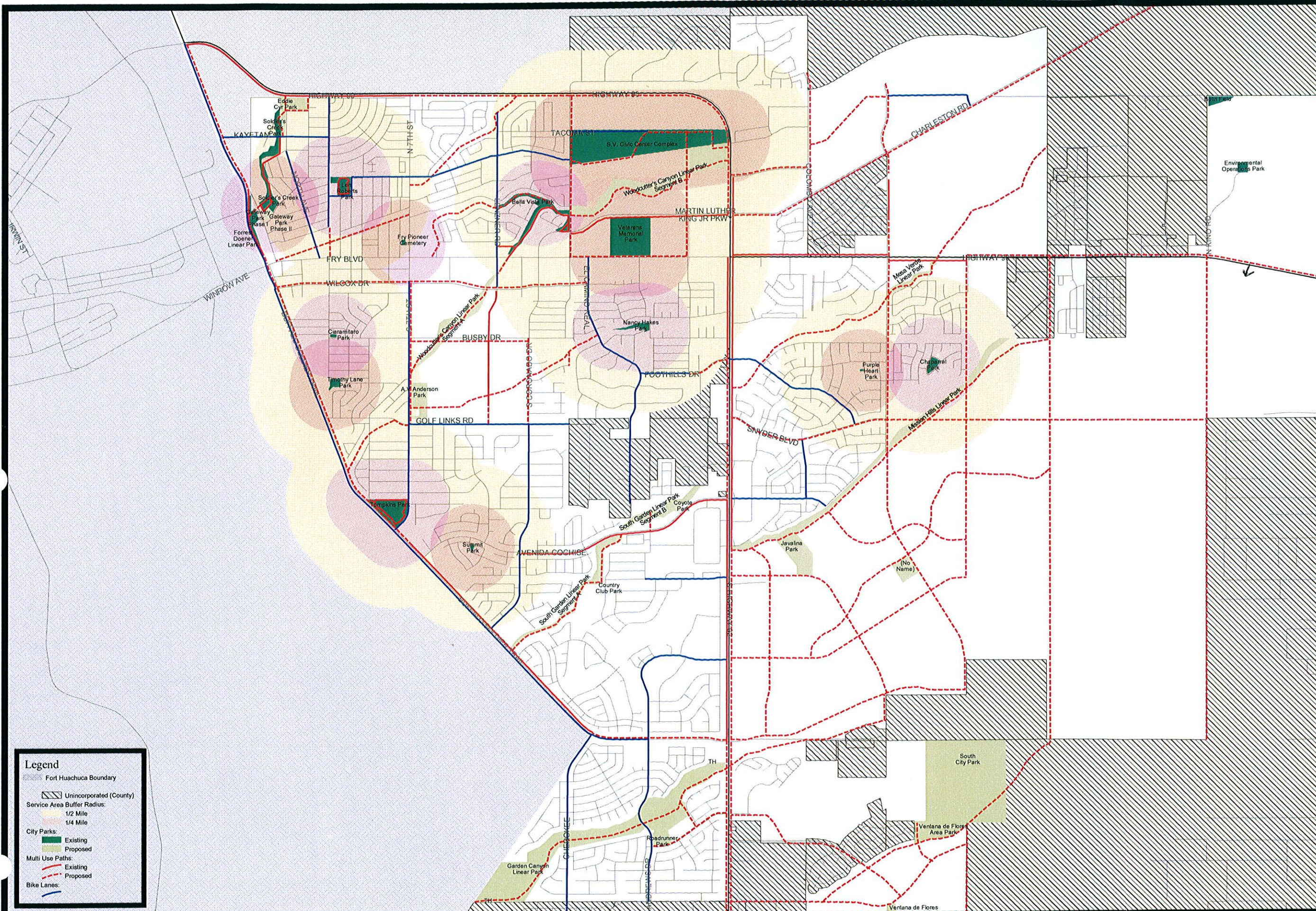


Public Parks 1/4 & 1/2 Mile Buffer Radius

This map is a product of the City of Sierra Vista GIS



0' 1" = 3000'



Legend

- Fort Huachuca Boundary
- Unincorporated (County)
- Service Area Buffer Radius:
 - 1/2 Mile
 - 1/4 Mile
- City Parks:
 - Existing
 - Proposed
- Multi Use Paths:
 - Existing
 - Proposed
- Bike Lanes:
 - Existing
 - Proposed

