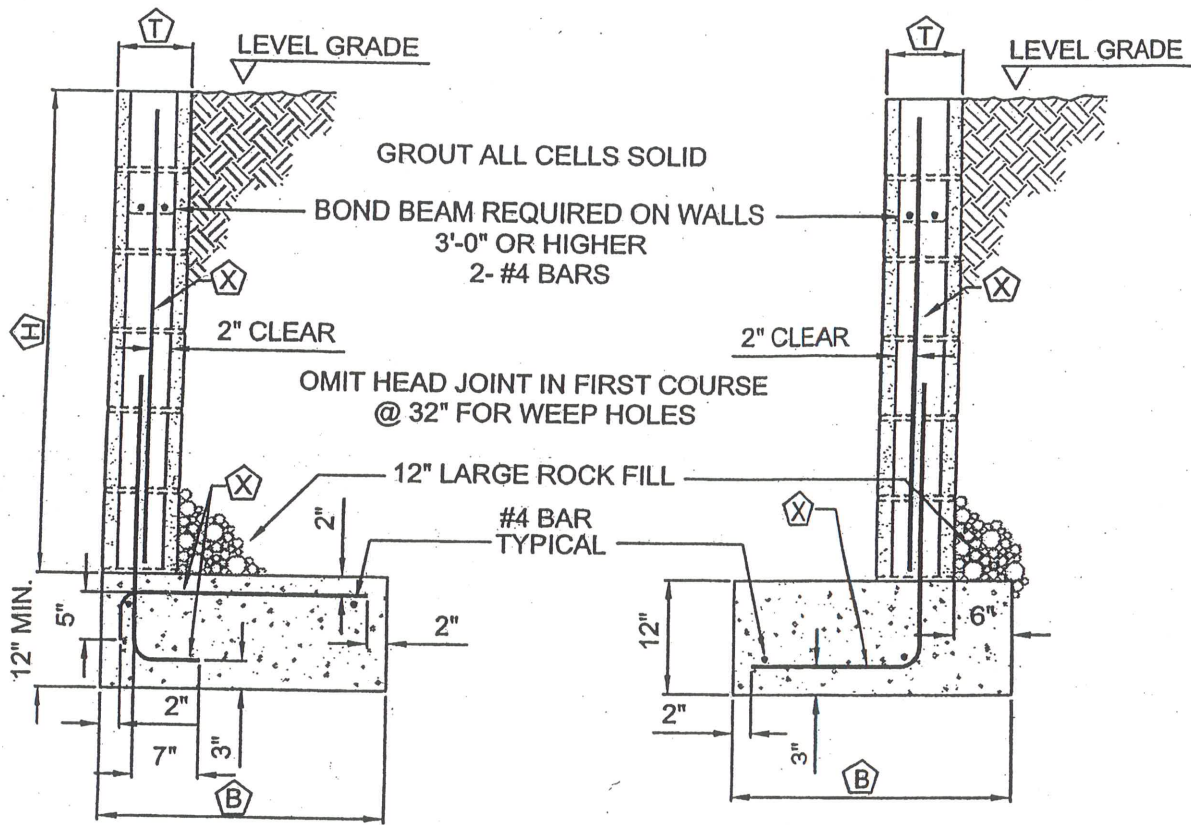


RETAINING WALL



POUR FOOTING AGAINST
UNDISTURBED NATURAL SOIL.

H	B	T	"X" BARS
2'-0"	1'-6"	6"	#3 @ 48" o.c.
3'-0"	1'-10"	6"	#3 @ 32" o.c.
4'-0"	2'-6"	8"	#4 @ 48" o.c.
5'-0"	2'-9"	8"	#4 @ 16" o.c.

GENERAL NOTES:

1. CONCRETE - 2500 P.S.I. MIN. @ 28 DAYS; MIX 1:2 1/2:3 1/2, MAX. w/c 7 1/2 GAL./SACK.
2. REINF. STEEL - ASTM. A15 & A305, MIN. fs=18000 P.S.I.
3. REINF. STEEL LAPS - MIN. 1" - 6"
4. CONCRETE MASONRY UNITS - ASTM C 90; CONC. BLKS. GRADE 'A'.
5. GROUT 1 PART CEMENT ; 2 TO 3 PARTS SAND; 2 PARTS PEA GRAVEL.
6. SOIL MAX. P.S.F. BEARING PRESSURE.
7. BACKFILL - COHESIONLESS SOIL.
8. ALL WORKMANSHIP AND MATERIALS TO CONFORM WITH THE INTERNATIONAL BUILDING CODE.
9. NO SURCHARGE ON WALL; CONSULT A PROFESSIONAL CIVIL OR STRUCTURAL ENGINEER FOR DESIGN OF RETAINING WALLS HAVING:
 - A) A HEIGHT GREATER THAN 5 FEET AND/OR
 - B) ANY SURCHARGE.