

Pavement Condition Analysis Results and Recommendations

Council Work Session
9/10/24



City Council Strategic Objective

“Prioritize reducing the number of road miles of city-owned streets that fall into the Very Poor or Poor classifications on the Pavement Condition Index, and maintain higher classifications to the extent possible.”



Evaluating Existing Conditions

- Prior to 2019 – visual assessment
- Now – automated analysis through radar
- Funding through SVMPO
- Pavement Condition Index (PCI)
- Backlog



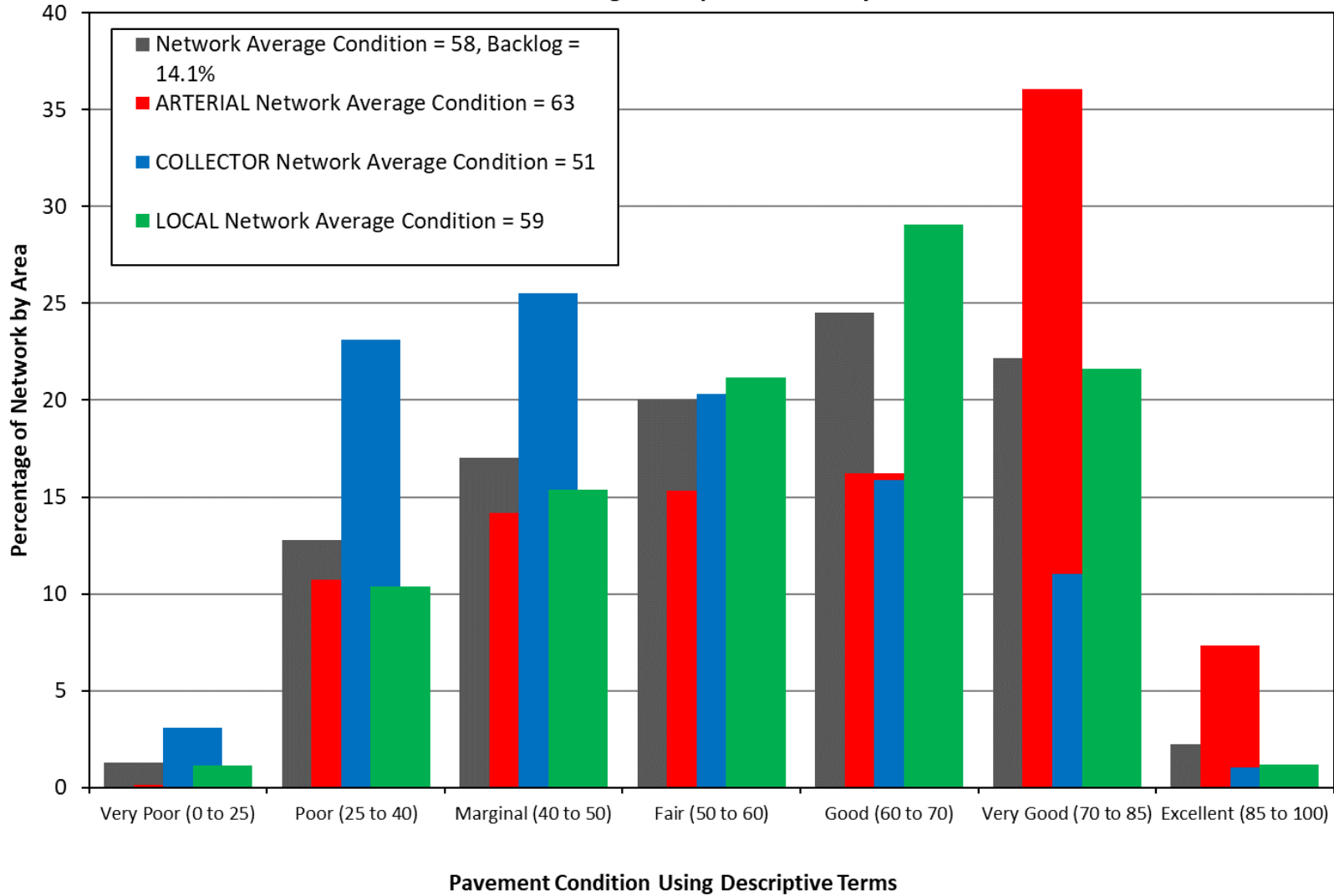
Key Findings

	Sierra Vista 2019	Sierra Vista 2024	National Average 2019*
Average Pavement Condition Index	64	58	60-65
Percent of Excellent	8.6%	2.2%	15%
Percent of Poor or Very Poor	6.2%	14.1%	12-15%



City of Sierra Vista, AZ

Pavement Condition Using Descriptive Terms By Functional Class



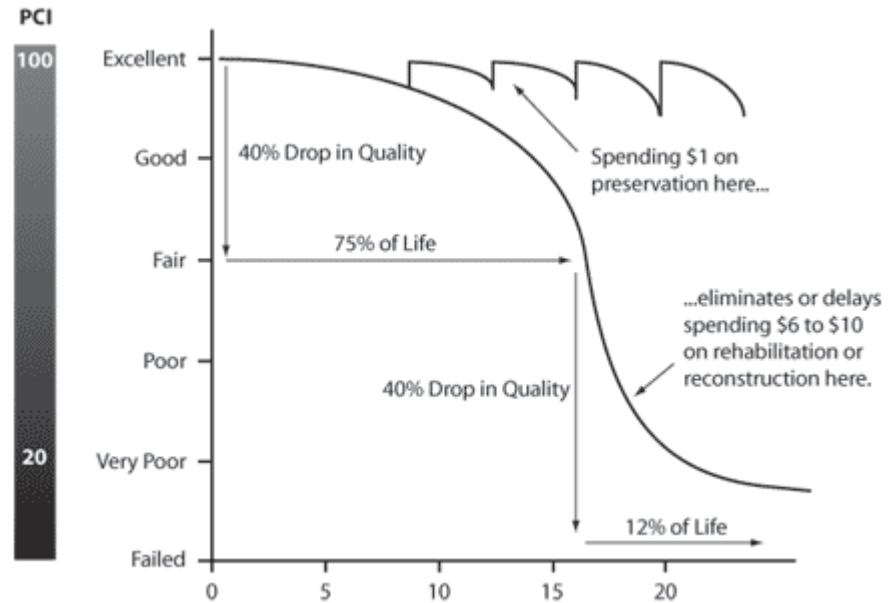
Challenges of Roadway Maintenance

- Aging infrastructure
- Antiquated funding streams
- Changes in vehicle weight
- Increase in larger vehicles
- Inflationary pressure
- Increased vehicle trips



Maintenance Strategies

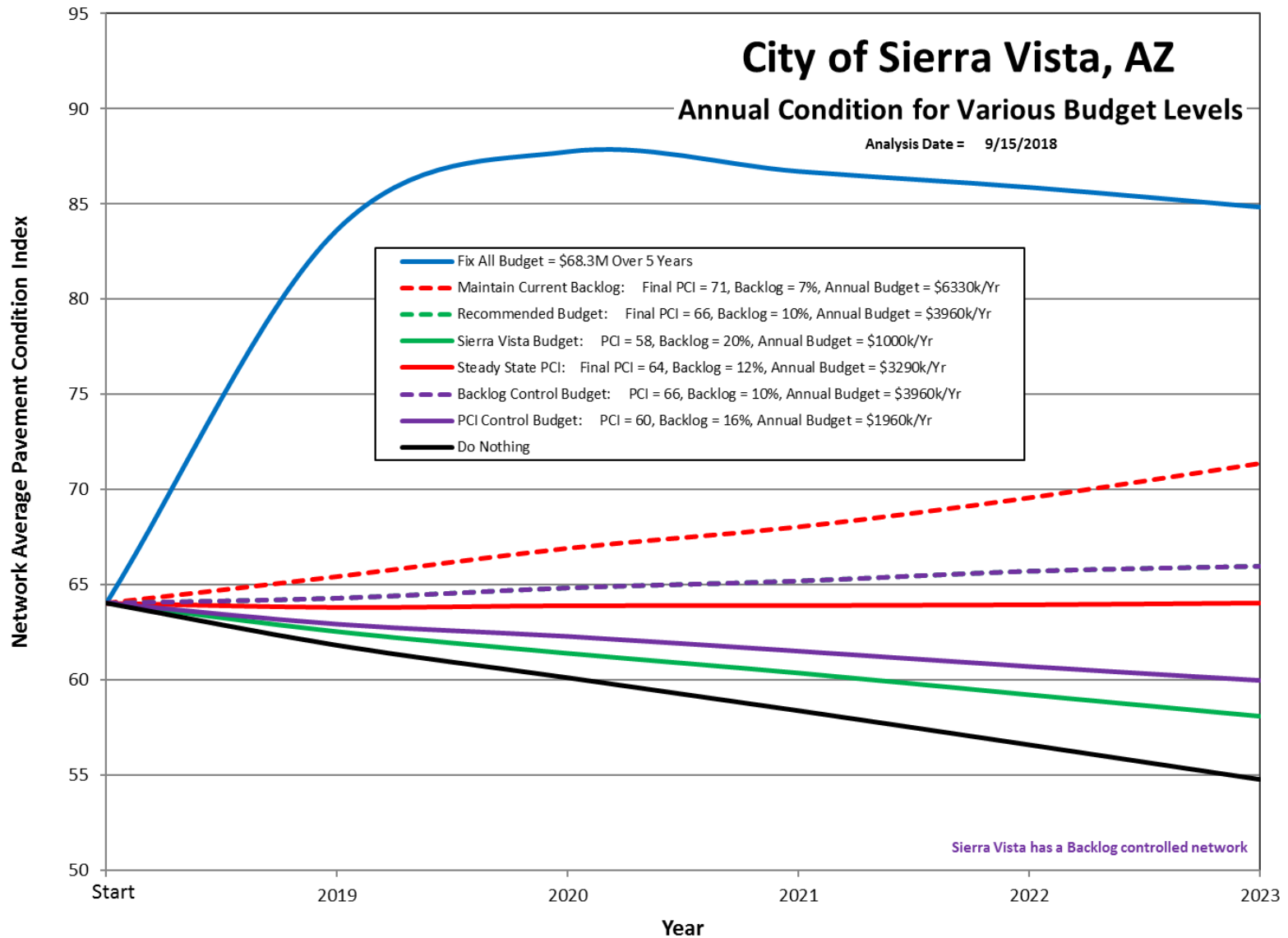
- Crack Seal
- Slurry Seal
- Chip Seal
- Overlay
- Mill and Fill
- Reconstruction



City of Sierra Vista, AZ

Annual Condition for Various Budget Levels

Analysis Date = 9/15/2018



Sierra Vista has a Backlog controlled network

Stretching Taxpayer Dollars

- Cluster work in neighborhoods
- Use economies of scale
- Evaluate new technologies
- Watch for the tipping point
- Be realistic about the strategy



Strategies for the Future

- Update GIS to help visualize trends.
- Continue to evaluate new technologies
- Reconsider pavement cross sections
- Update survey every few years
- Aggressively pursue grants for larger roadways

