

The background of the slide is a light gray gradient with several realistic water droplets of various sizes scattered across it. The droplets have highlights and shadows, giving them a three-dimensional appearance.

ENVIRONMENTAL STEWARDSHIP COMMISSION PRESENTATION TO CITY COUNCIL JUNE 25, 2024

COMMISSIONERS: JOELLE BUFFA (PRESENTER) STEVE SPEARMAN (CHAIR),
BRUCE PHILLIPS, BRUCE TALERICO, DAVID JONES

ADDITIONAL RECYCLE WORK GROUP MEMBERS: BETTY & ROBERT POYNTER,
KAREN LEMAY, WILLIAM INDELICATO

Recent Activities

- Input to Vista 2040 Environmental Goals
- Updated City's Where to Recycle Web Page
- Articles on Reduce, Reuse and Recycle in City Publications & Media

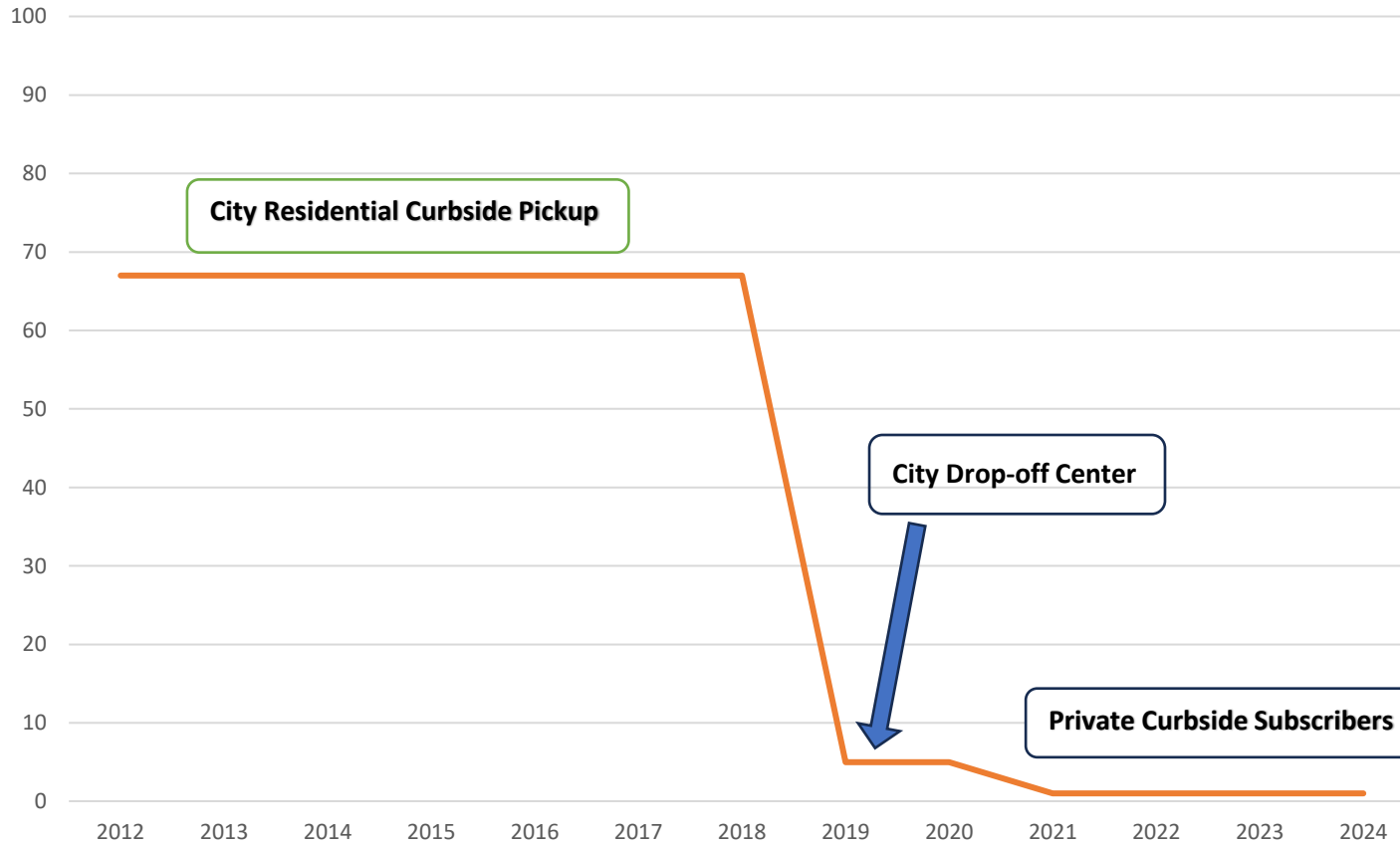
What's the state of recycling in Sierra Vista?

- By mark.hays@myheraldreview.com
- Apr 4, 2024

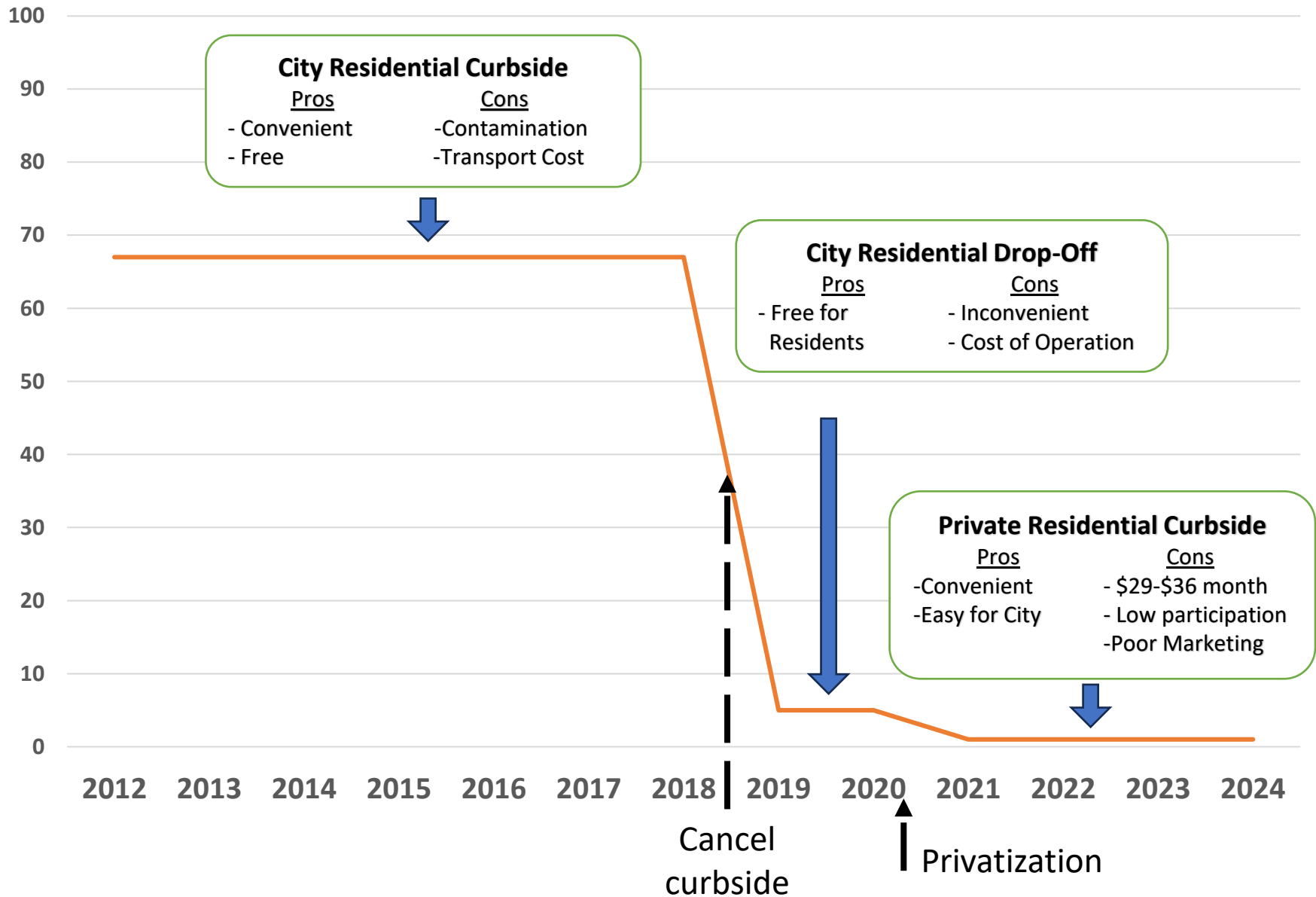
SIERRA VISTA — It's been several years since the city of Sierra Vista offered [curbside recycling pickup](#), and the percent of residents recycling is low. To examine the future of recycling in SV, the city's [Environmental Stewardship Commission](#) formed a recycling work group earlier this year that is looking at possible solutions.



Percentage of Sierra Vista Residential Households Participating in Residential Recycling Services



Barriers to Past/Present Sierra Vista Recycling Programs

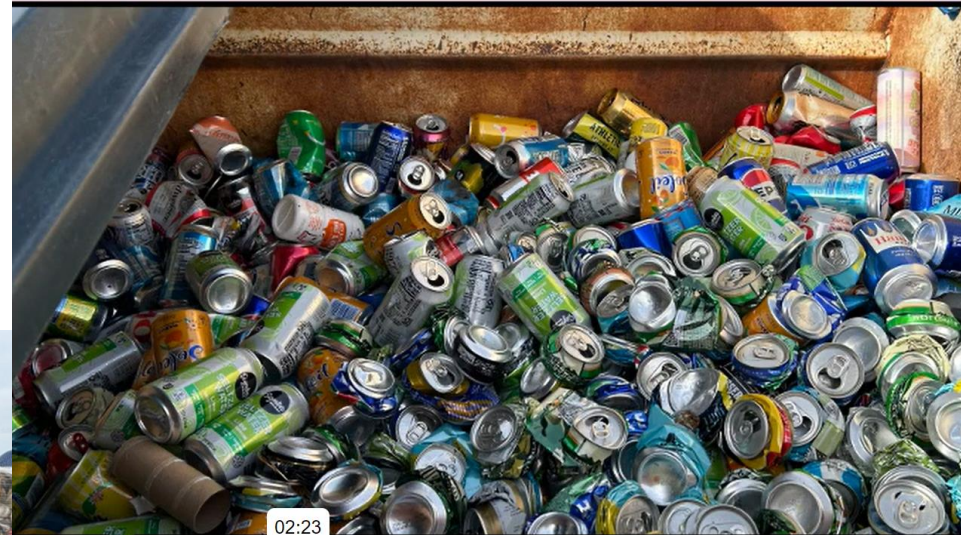


The January 2020 decision to privatize recycling was not an easy one

- **Mayor Mueller:** *“The City is not giving up on recycling...and will continue to look for ways and opportunities in the future to recycle.”*
- **Councilwoman Calhoun:** *“ I encourage City’s staff, The Environmental Affairs Commission, and citizens to continue to look for ways on how the City might be able to re-establish municipal recycling.”*

BISBEE DROP-OFF CENTER

Location, Location: 1 mile from Safeway



Cans
Cardboard
Plastic

} Baled Separately

Estimated Fuel Cost of Moving a Truck Load of Cardboard to Tucson

	Tons per Load	Trips to Tucson	Gallon of Fuel	Fuel Cost for 1 Load	Monthly Cost for 8 loads
LOOSE LOAD	1.11	8.7	123.5	\$407.45	\$3,259.52
COMPRESSED & BALED	9.63	1.0	17.3	\$ 57.20	\$ 457.60

Table adapted from High Density Baler analysis conducted by Robert Poynter



Bisbee's Vertical Baler



Bisbee trucks mixed loads of compressed/baled materials to Tucson

Agenda Packet Last Page
 Environmental Stewardship Presentation to City Council
 June 25, 2024

Supplemental Material for Powerpoint: Slide # 7 compares two methods of transporting a load of recycled cardboard to Tucson materials recovery markets. A Loose Load (method that Sierra Vista historically and currently uses) vs. Compacted and Baled Load (method used by Bisbee which is significantly less costly).

The analysis was based on data from WasteCare Corporation’s website. There would also be comparable cost savings of transporting other recyclable waste materials in Compacted and Baled Loads instead of Loose loads, as shown in the table below.

WasteCare Corporation is your source for commercial trash compactors, balers, waste equipment, recycling equipment, industrial shredders and grinders, and other waste related products and services.
[Home](#) > [Sitemap](#) > [Useful Waste Related Information](#)



Recyclable Waste Materials - Typical Weights Loose Versus Compacted / Baled

Typical Weights – Approx.

Type of Material	Loose (Pounds per Cubic Yard)	Compacted / Baled (Pounds per Cubic Yard)
Cardboard / Corrugated	50 - 100	600 – 1,100
PET (Soda Bottles, Food Packaging etc)	30 - 40	400 - 600
HPDE (Milk jugs, Detergent Containers etc)	22 - 25	400 - 500
Aluminum Cans	50 - 75	250 - 500
Steel Cans	150 - 175	700 – 1,000
Paper	250 - 500	1,000 – 1,200
Newspaper	350 – 500	750 – 1,000
Glass	500 – 700	1,500 – 2,200

 [Follow Us on Facebook](#)

 [Follow Us on Twitter](#)

 [Subscribe to Our Feed](#)

Short-term Actions

- Marketing Study: Short Questionnaire using City's Engage Platform
- Reinstate the Glass Recycling Drop-off Point at Public Works Parking Lot & Perhaps Partner with Bisbee to support their glass crusher
- One Reduce/Reuse/Recycle Tip per Month published in City publication (print or social media)



Marketing Study using Sierra Vista's Engage Platform (Sample Questions)

1. Do you recycle now? If so where?
2. Would you be willing to take clean, sorted recyclables to a drop-off location?
3. How far would you be willing to drive to transport recyclables?
1-2 miles 2- 5 miles >5 miles Would not transport recyclables
4. Would you be willing to pay an additional amount in your utility bill for a recycling program
5. If so, how much would you be willing to pay (each year)?
\$ 1 – 30 \$ 31 – 60 \$ 61 – 80 \$ 81 – 99

Medium-term Actions

- Partner with local Business(s) for Cardboard drop-off Center
- Make recycling fun: Art from Recycled Materials competition at Art in the Park
- City task force to evaluate providing additional municipal recycling services in light of new market factors and technology



Longer-term Actions

- Explore the use of a Memorandum of Understanding between the City, Fort Huachuca, Businesses or other entities for a unified, expanded recycling effort
- Join Bisbee & other communities in the ADEQ-sponsored Hub & Spoke Recycling Option for Cochise County

Ask not what recycling can do for you, But What you can do for recycling

- Conduct resident survey on recycling attitudes through City's Engage Platform
- Publish monthly recycling outreach/educational message (print or social media)
- Re-start glass recycling drop-off



Sierra Vista Environmental Stewardship Commission (ESC) & Recycling Work Group Presentation to City Council Work Session June 25, 2024

Since June 2023, this Commission has met monthly to discuss ways to be a good steward of our local environment. Recycling was a common theme, and the Recycling Work Group became an active work group, with between 6-10 attendees at meetings.

Members of the work group have:

- Updated the City's "What and Where to Recycle" website page information,
- Worked with City Planners to add recycling goals to the Vista 2040 Plan,
- Written recycling articles in Sierra Vista publications, and
- Encouraged SV Herald and other media to promote benefits of recycling.

Proposed Short-term Actions:

- Marketing study to determine community interest in recycling,
- Reinstate glass recycling to support Bisbee's glass crushing program, and
- Publish one Reduce/Reuse/Recycle tip per month in City print or social media.

Proposed Medium-term Actions:

- Partner with local businesses for cardboard drop-off center,
- Make recycling fun: Competition or activity at city-sponsored event to creatively engage people in recycling, such as an "Art from Recycled Materials" contest at Art in the Park, and
- City task force to evaluate providing additional recycling services.

Proposed Long-term Actions:

- Develop Memorandum of Understanding between Sierra Vista, Fort Huachuca, Businesses and/or other entities for a unified expanded community recycling effort, or
- Unite with Bisbee and other Cochise County communities to implement AZ Dept. of Environmental Quality's (ADEQ) Hub and Spoke recycling model for rural areas.

WE ASK FOR CITY COUNCIL GUIDANCE AND APPROVAL ON THE FOLLOWING:

1. Using the City's ENGAGE platform, publish a survey asking Sierra Vista residents' willingness to recycle, with curbside pickup or drop-off center, and what they would be willing to pay for these services.
2. Reinstating glass recycling and/or investigating feasibility of a cardboard drop-off center.
3. Promoting a competition for art made from recycled materials at Art in the Park or similar community event.
4. Partnering with other entities to expand community recycling efforts.